



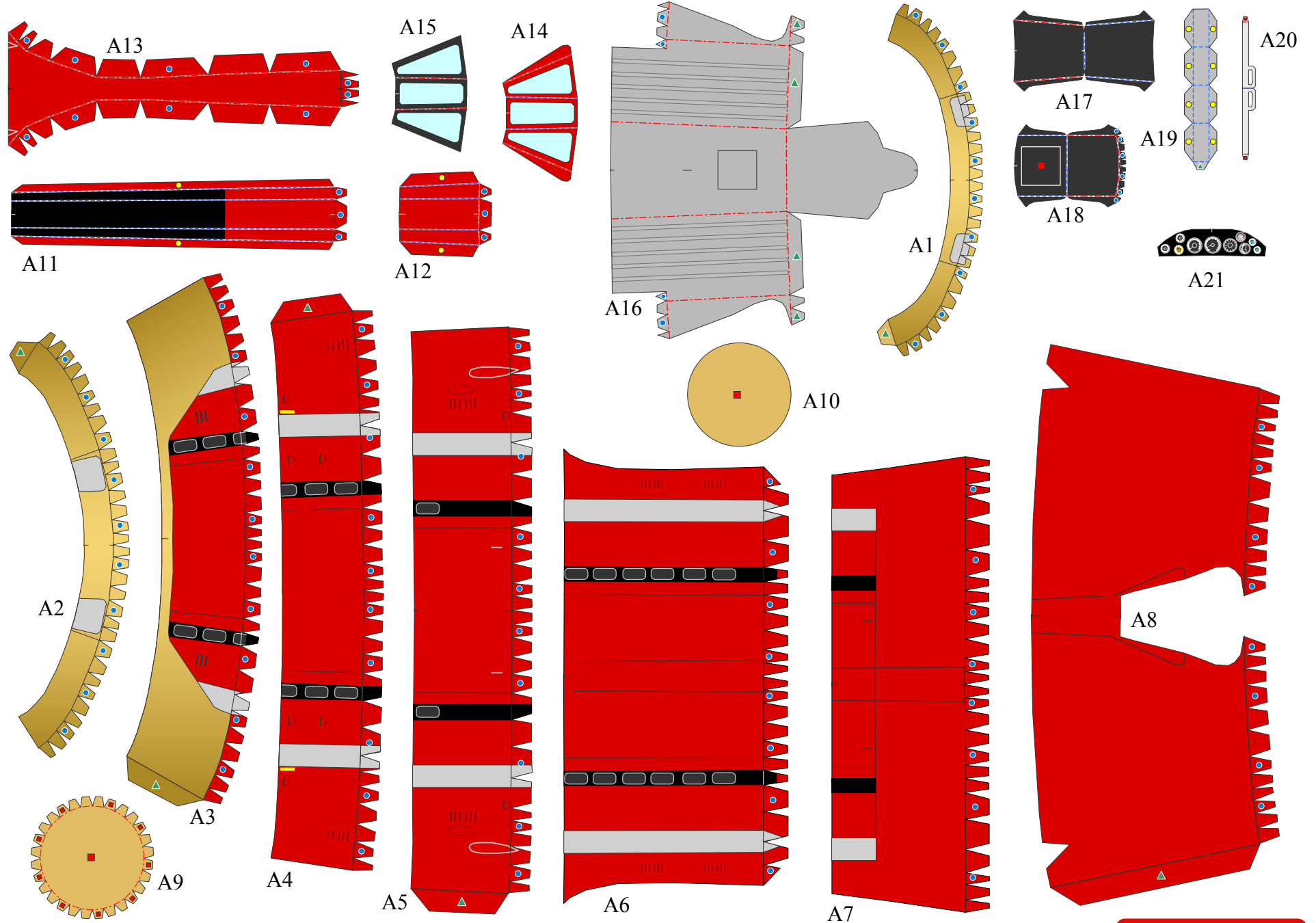
MACCHI M.C.72

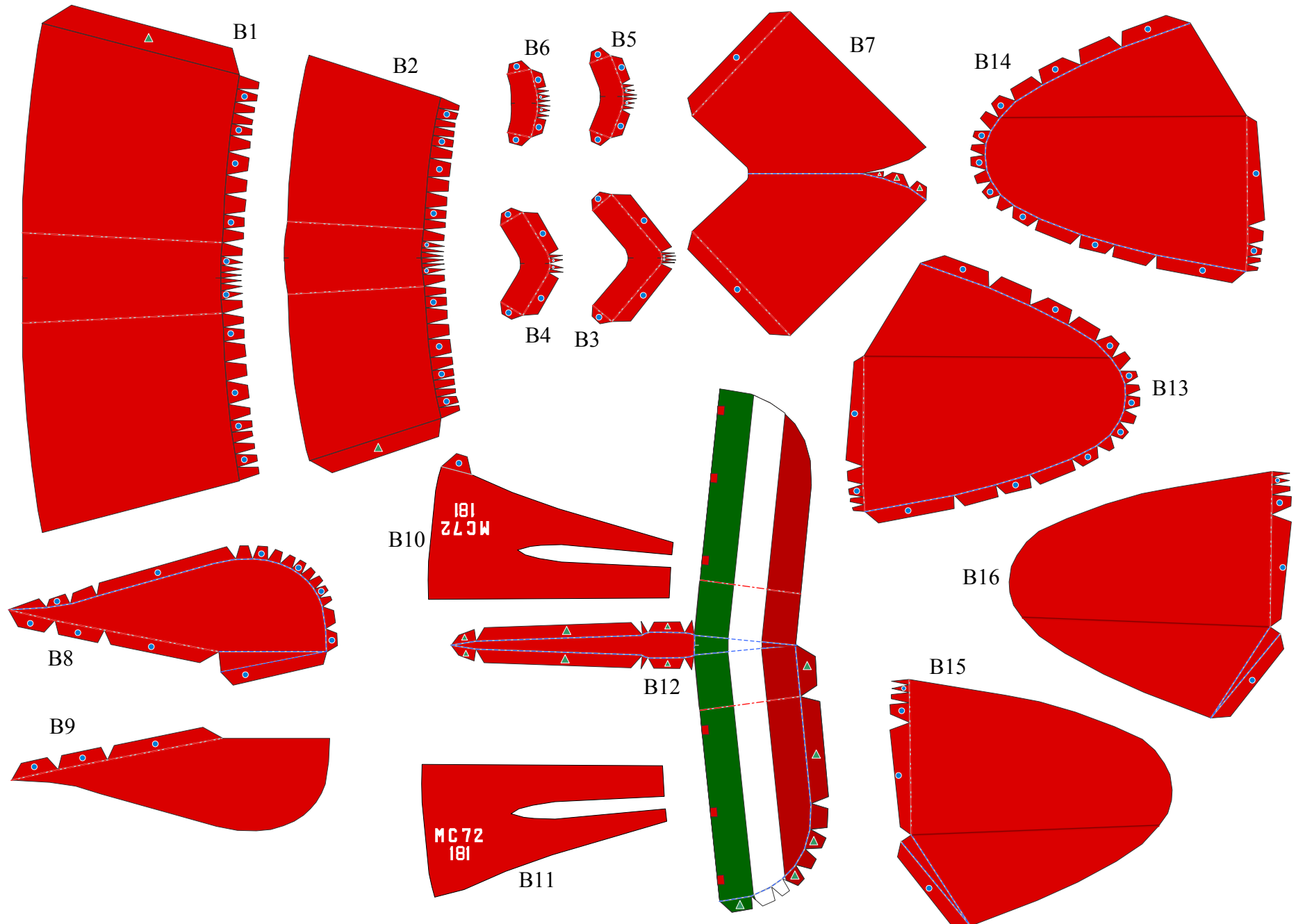
Completed Model (Total length)	About 350mm (Scale About 1:24)
(Total width)	About 380mm
Pattern	11 pages (No.of Parts: 172)
Assembly Instructions	12 pages

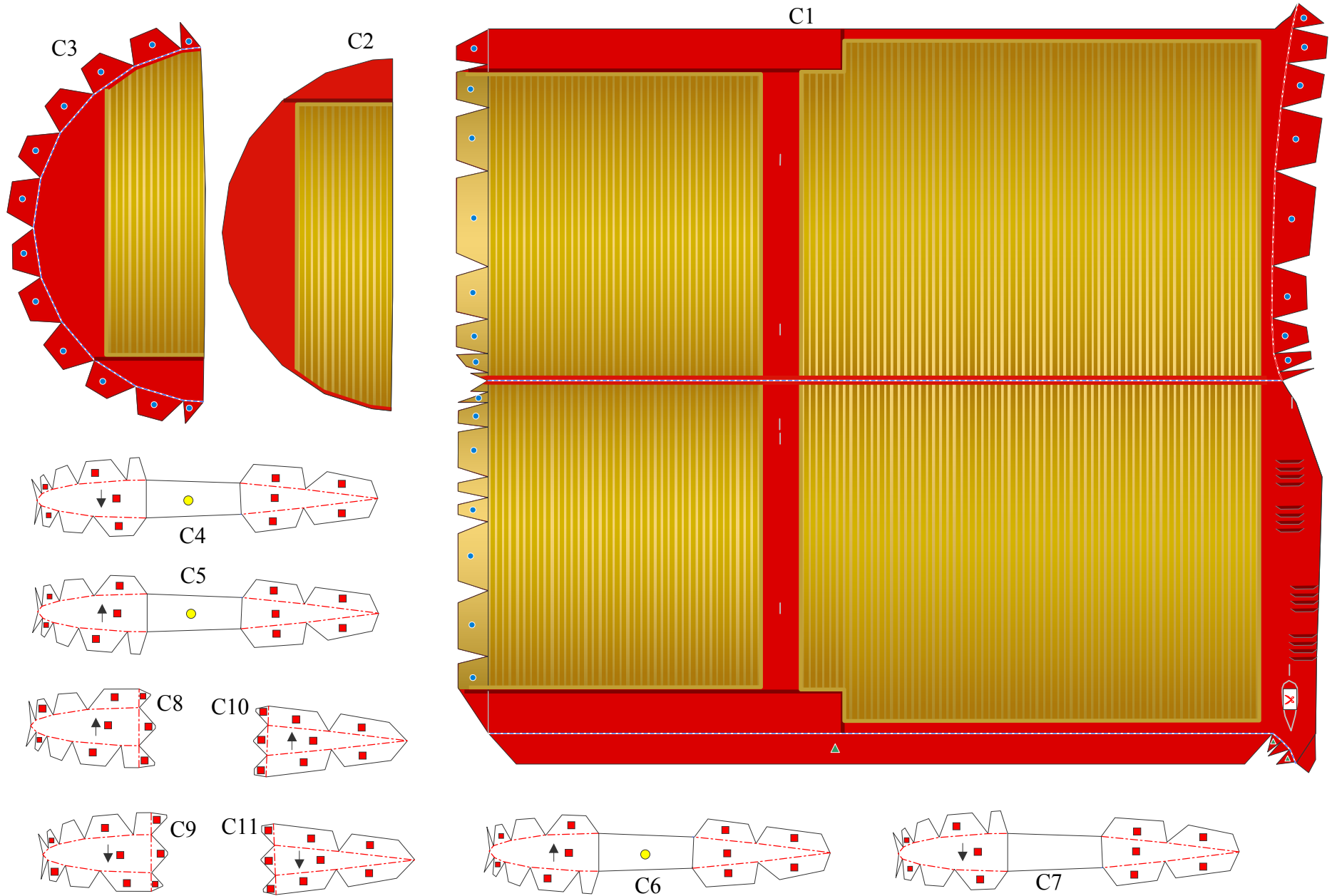
The Macchi M.C.72 is a sea-based aircraft designed and manufactured for the Schneider Trophy Race by Italian aircraft company Macchi Aeronautica. It has contra-rotating propellers and a V-type 24-cylinder engine. By negating the powerful torque effect thanks to its large horsepower engine and propellers, the Macchi M.C.72 actualizes high speed and great maneuverability. The world speed record it set in 1934 of 709km/h for a piston engine sea-based aircraft still remains to this day. The scale of this papercraft is approximately 1/24 of the original size.

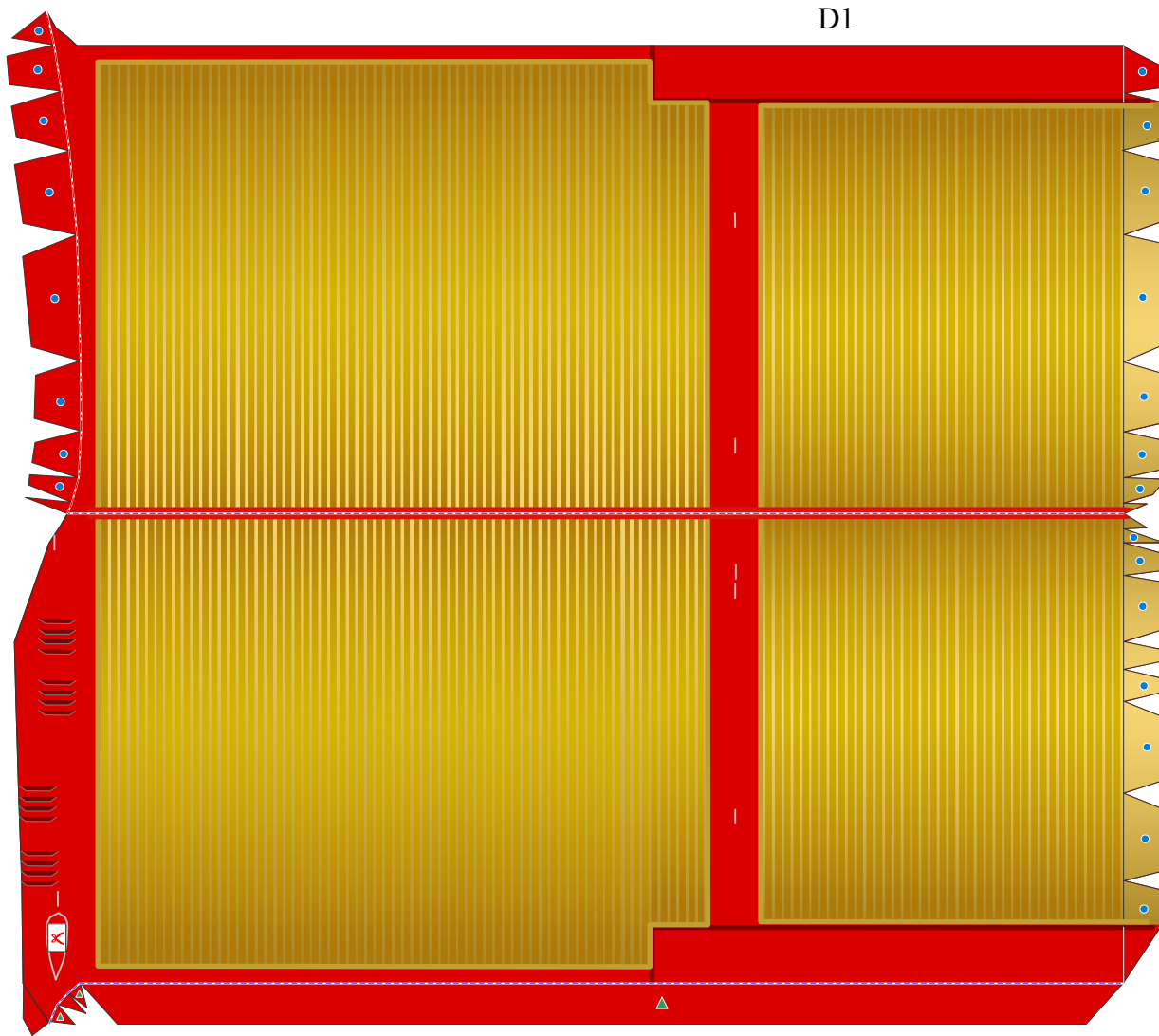
This model was designed for Papercraft and may differ from the original in some respects.

*Build the model by carefully reading the Assembly Instructions, in the parts sheet page order.

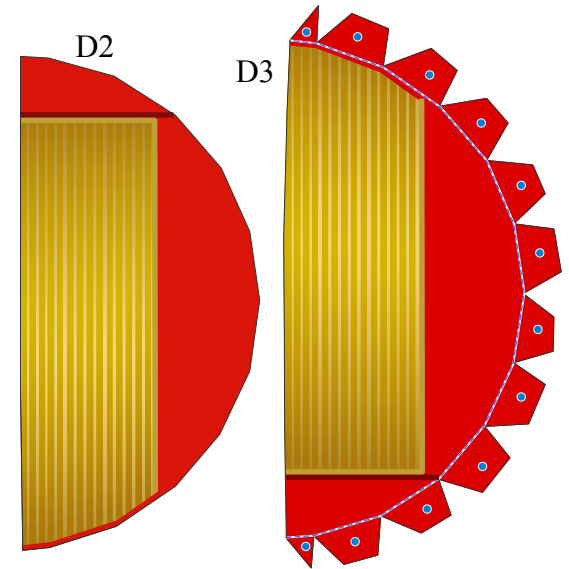






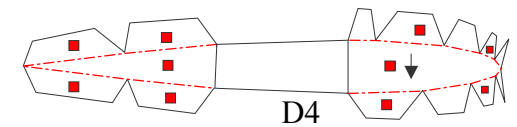


D1

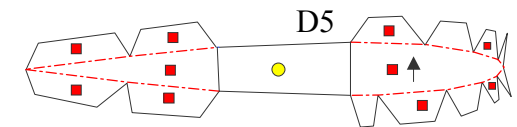


D2

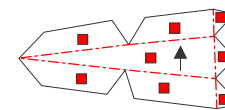
D3



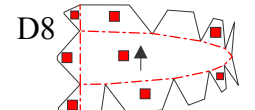
D4



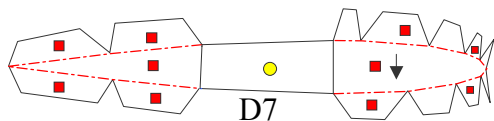
D5



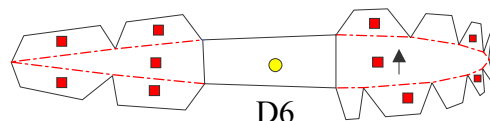
D9



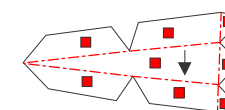
D8



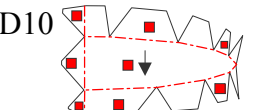
D7



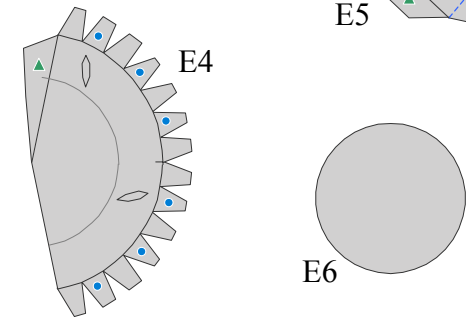
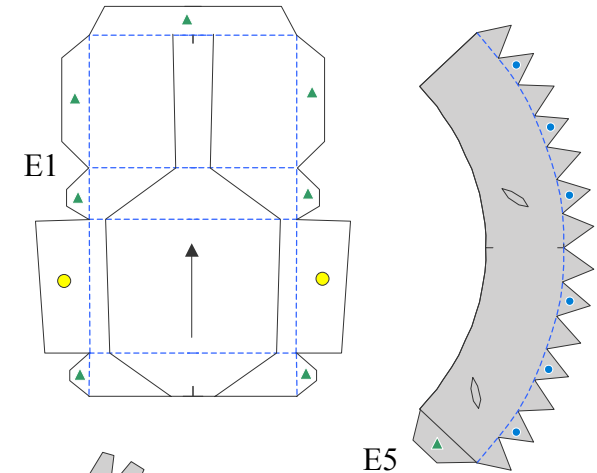
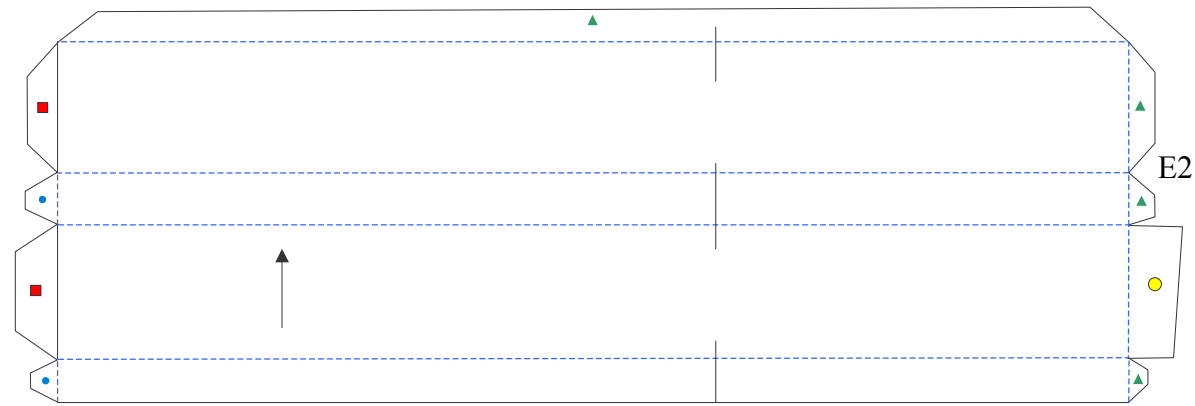
D6

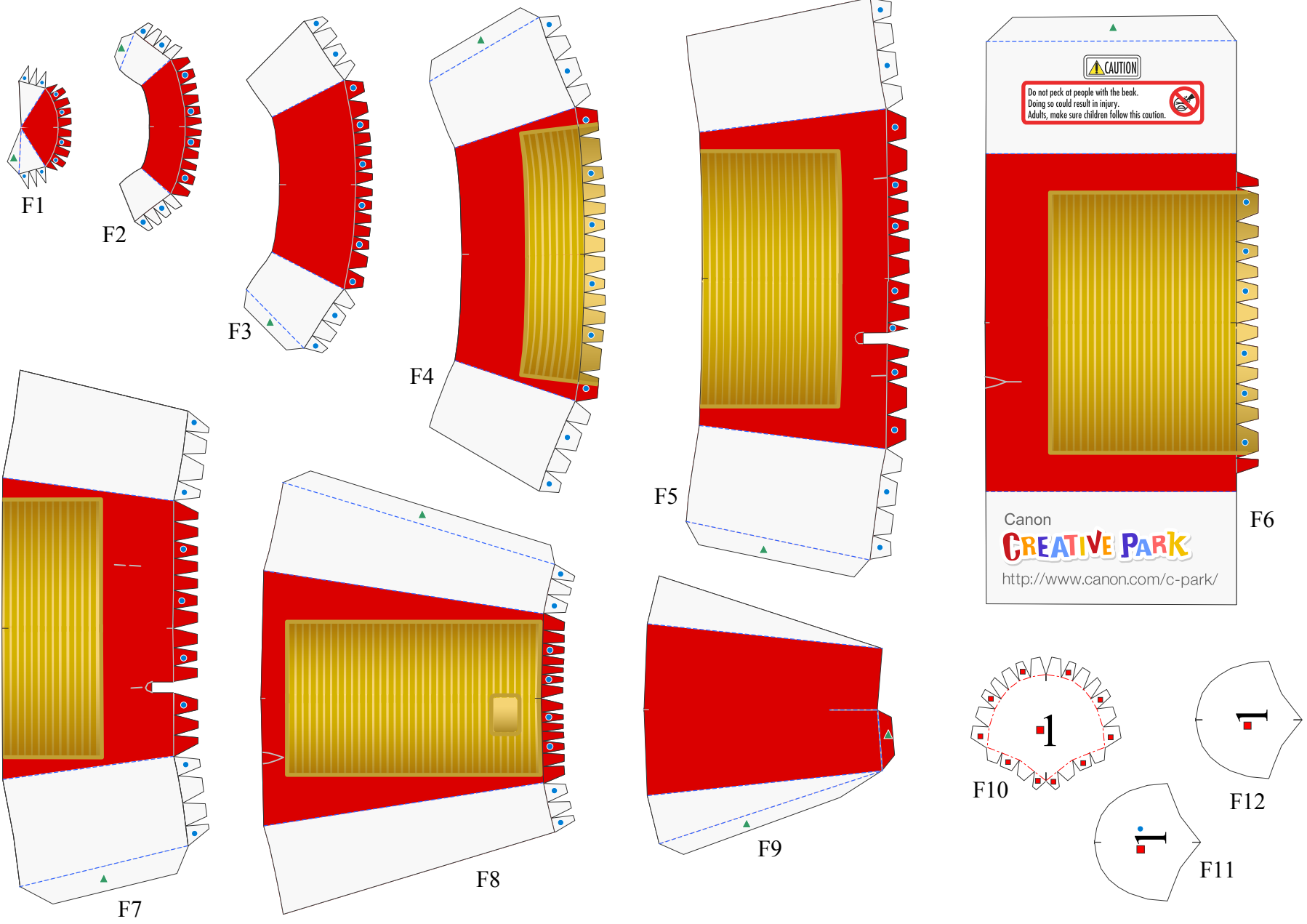


D11



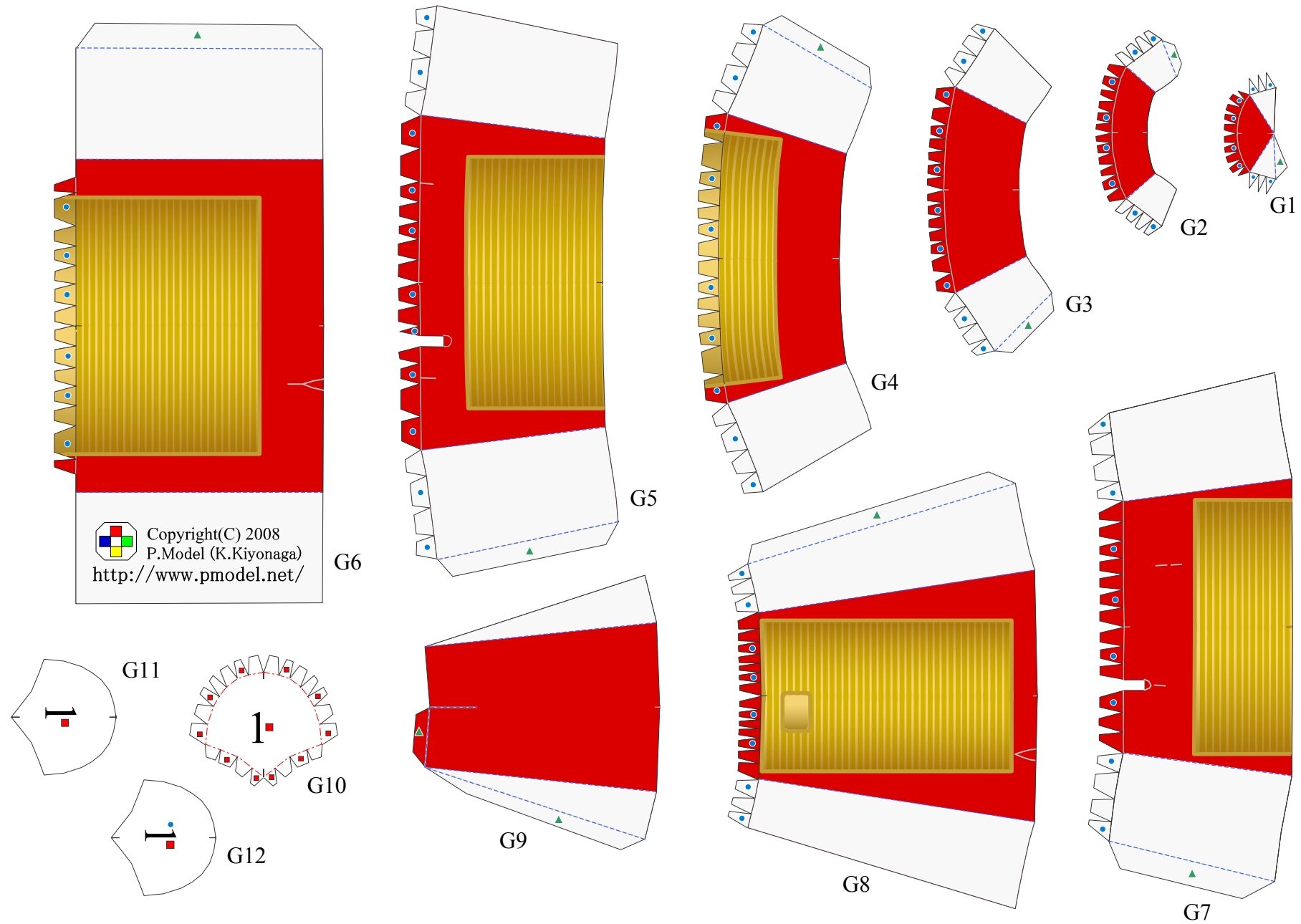
D10

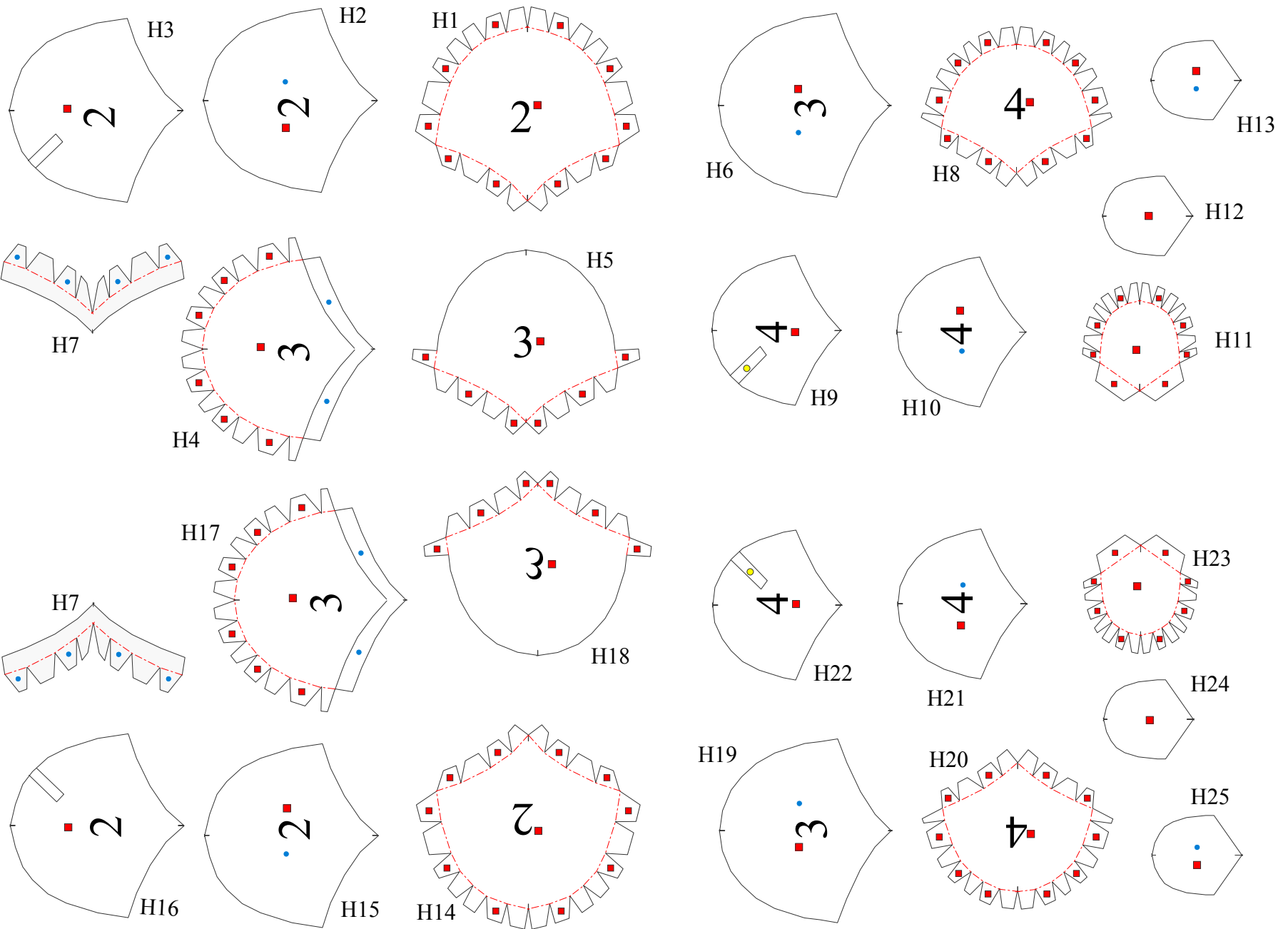


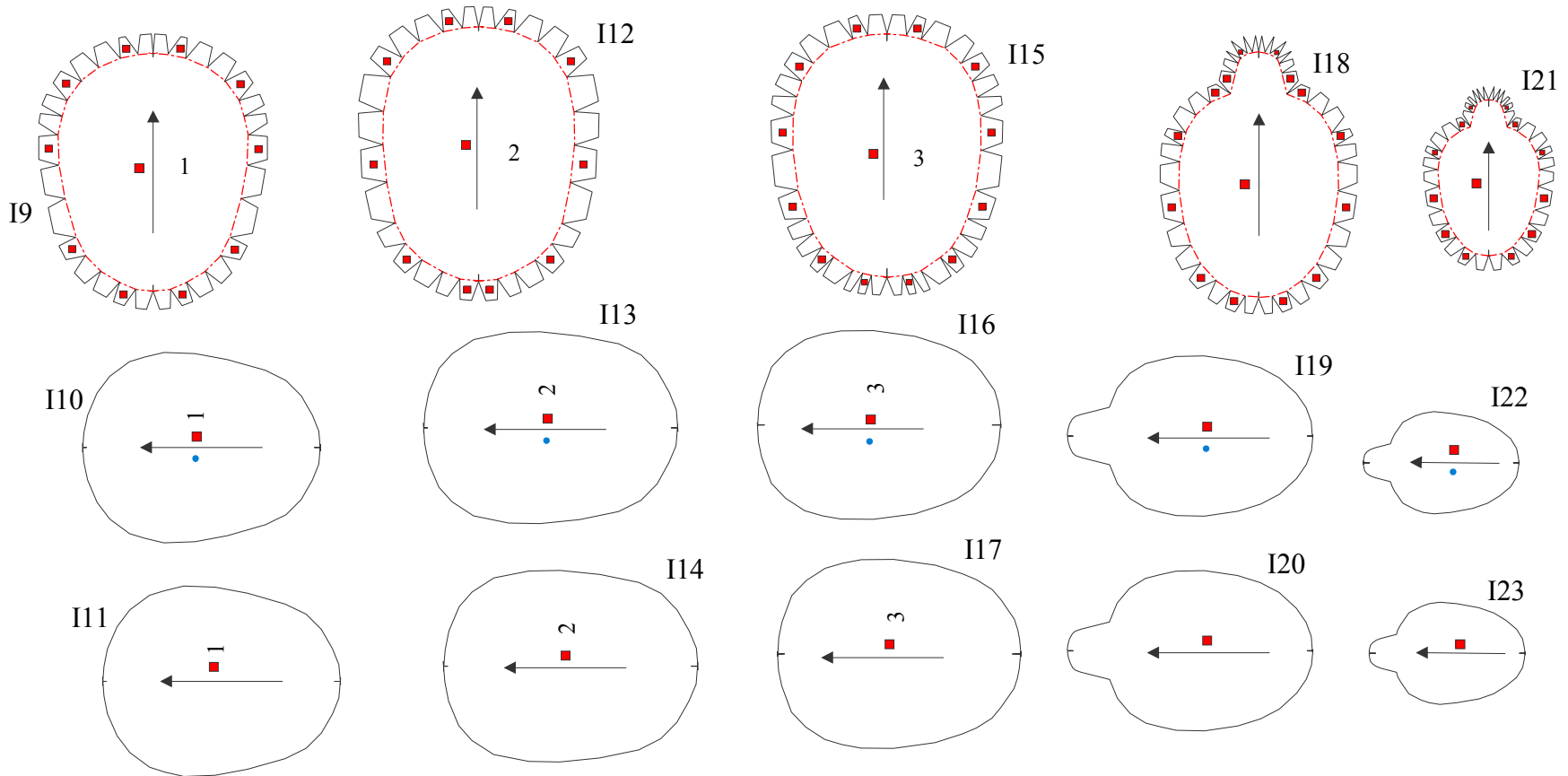
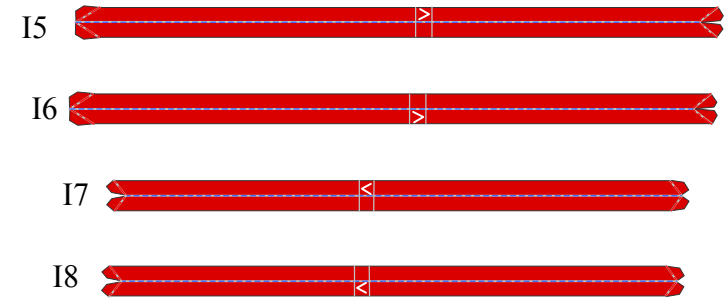


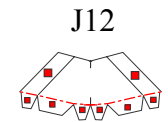
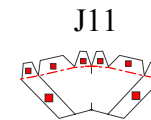
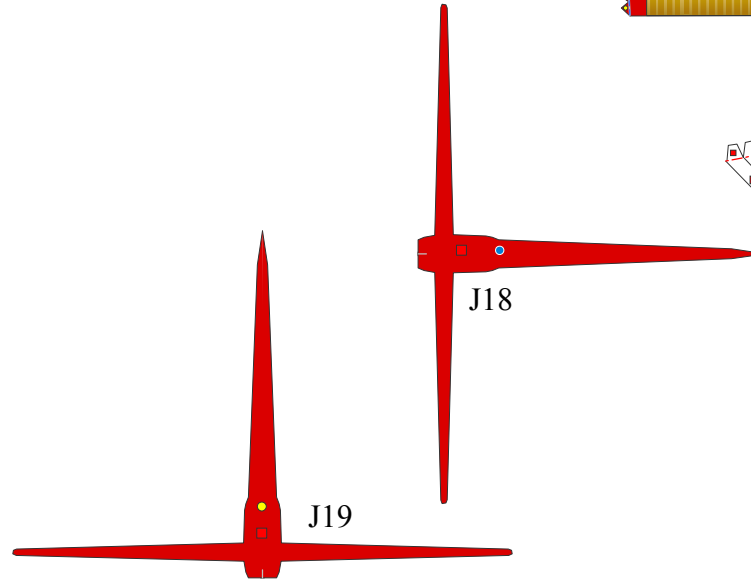
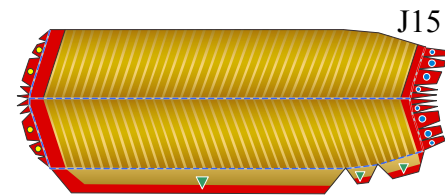
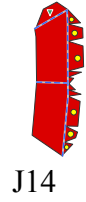
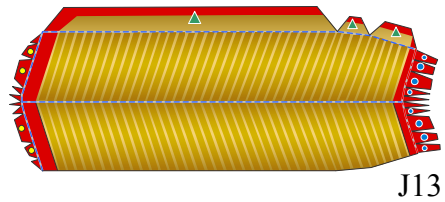
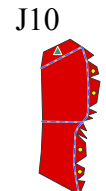
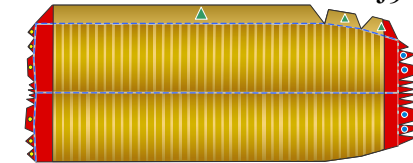
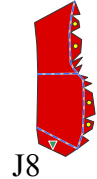
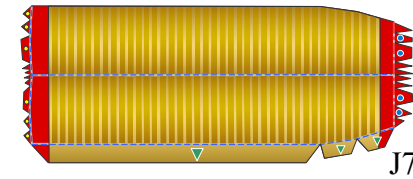
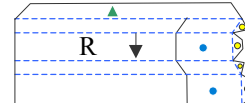
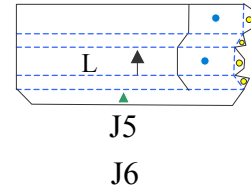
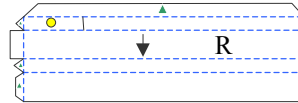
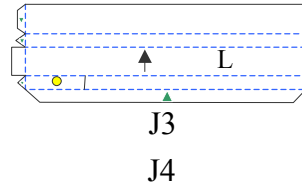
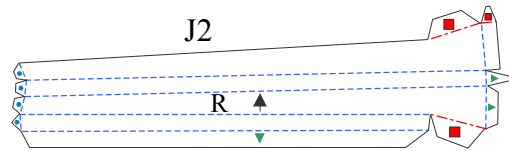
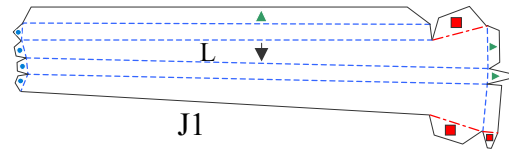
CAUTION
Do not peck at people with the beak.
Doing so could result in injury.
Adults, make sure children follow this caution.

Canon
CREATIVE PARK
<http://www.canon.com/c-park/>









J20

