



Munchkin



- Length: Approx.30 to 40cm (approx. 1 to 1.3 feet)
- Weight: Approx.3 to 5kg (approx. 6.6 to 11 lbs)
- Origin: USA
- Personality: Cheerful and curious

The munchkin is a breed of cat known for its noticeably short legs. It was recognized as a breed following a breeding program that began with a kitten in Louisiana, America, that had been born with unusually short legs due to a genetic mutation. It has a semi-cobby (compact, muscular and heavy boned) body type, a straight tail, and a heart-shaped face. There are both short-haired and long-haired munchkin cats. The munchkin is a cheerful and curious breed of cat, which settles easily with humans, making it great as a pet.



Tools	Notation Key
Scissors	——— Scissors line
Paste, or woodwork glue Mountain fold
Stencil pen, or bodkin	— · — · — Valley fold
Ruler	+ Glue spot
	A1, B1 Parts No.

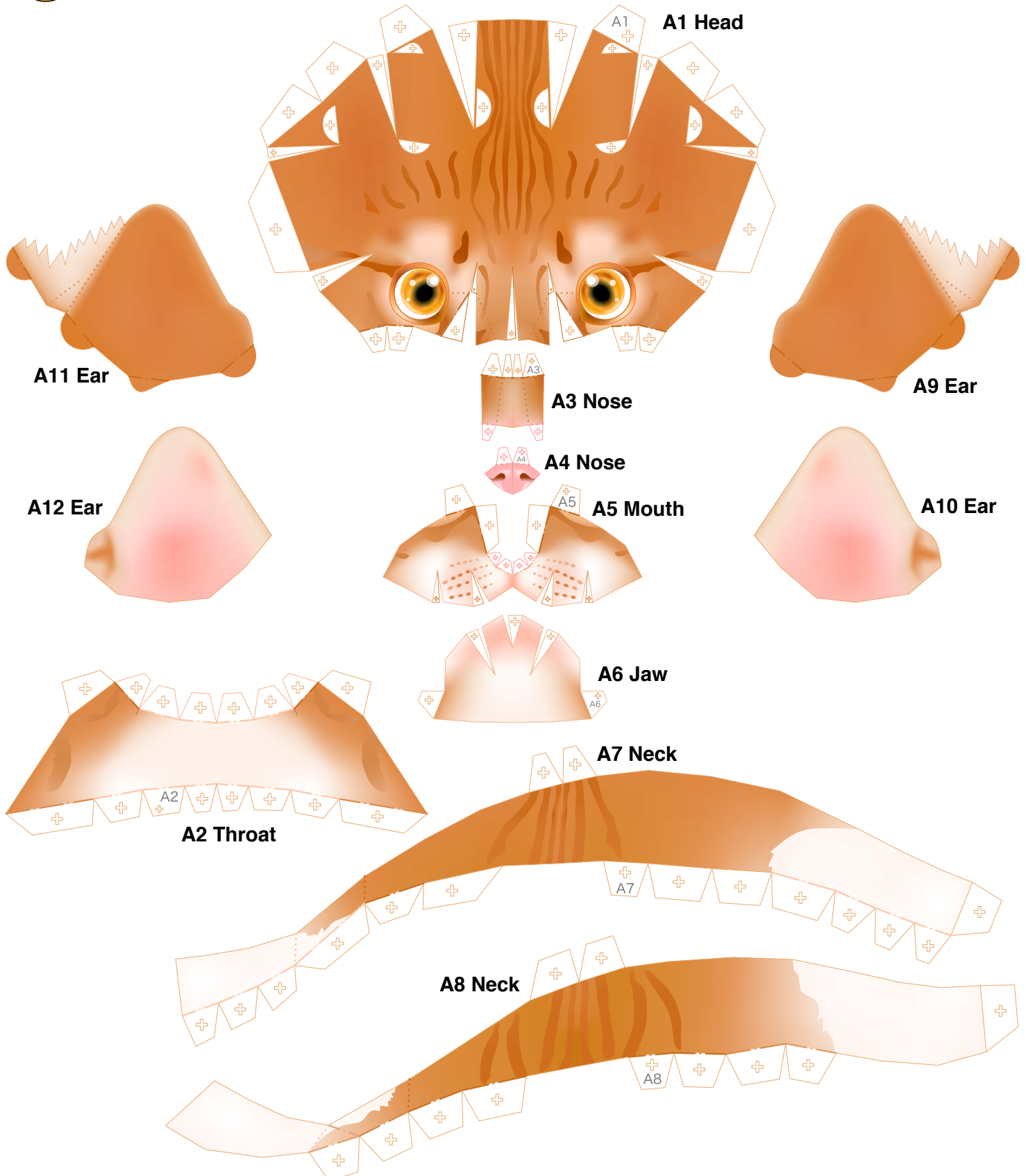
- ◆ The Pattern is divided into three blocks:
 A (head), B (front legs, body), and C (waist, hind legs, tail).
 Follow the instructions for each block to assemble your munchkin.

- <Caution>
- ※ Keep scissors and glue away from small children.
 - ※ Be careful not to cut your fingers when using scissors.



Head parts

Refer to Assembly Instructions: Page1 / Page2.

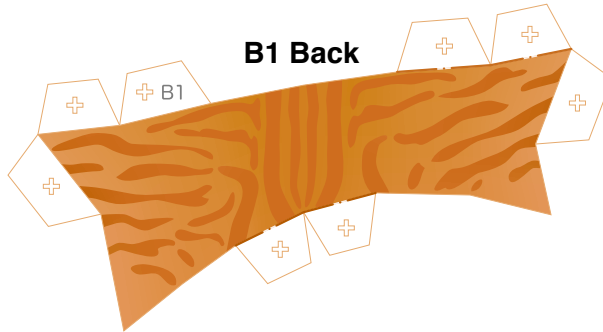




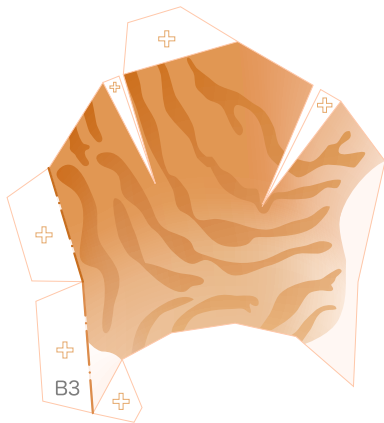
Front leg parts

Refer to Assembly Instructions: Page3.

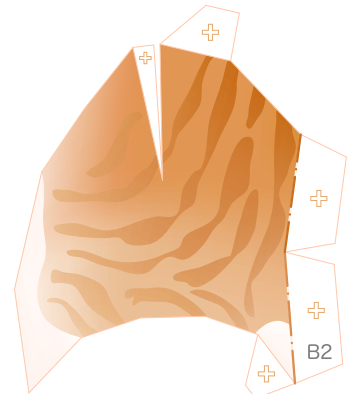
B1 Back



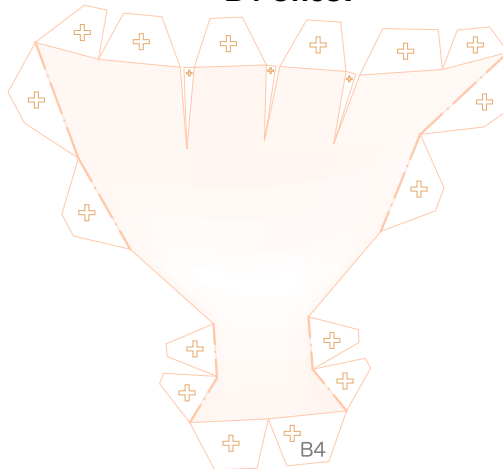
B3 Right shoulder



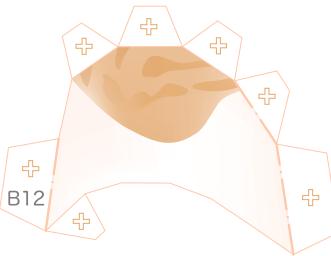
B2 Left shoulder



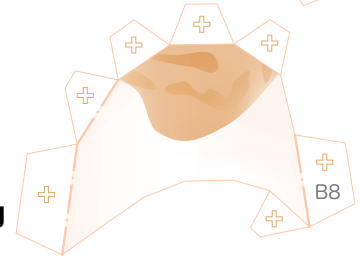
B4 Chest



B12 Right leg



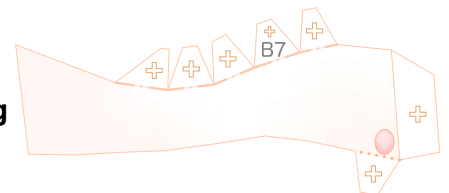
B8 Left leg



B11 Right leg



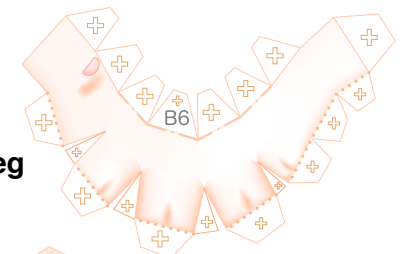
B7 Left leg



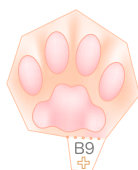
B10 Right leg



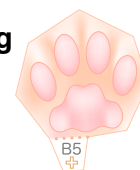
B6 Left leg



B9 Right leg



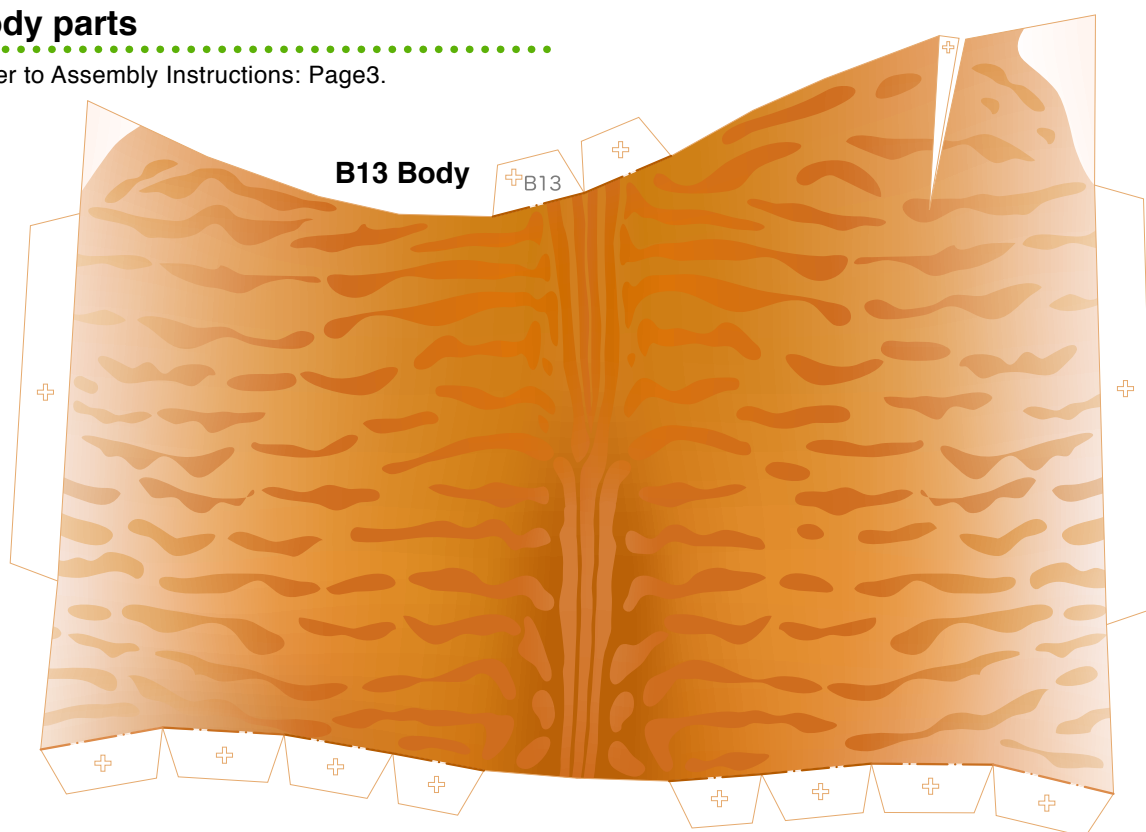
B5 Left leg





Body parts

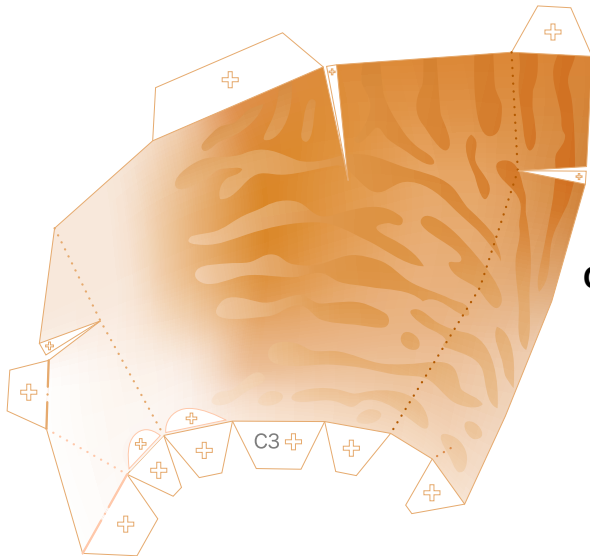
Refer to Assembly Instructions: Page3.



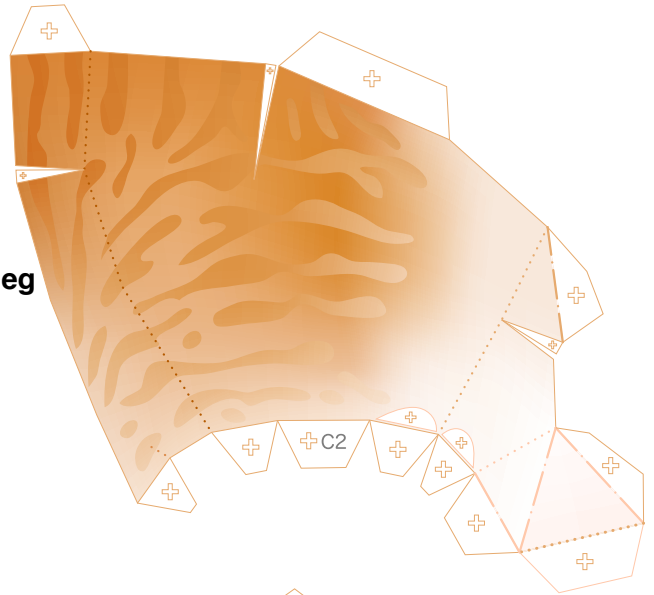


Waist and hind leg parts

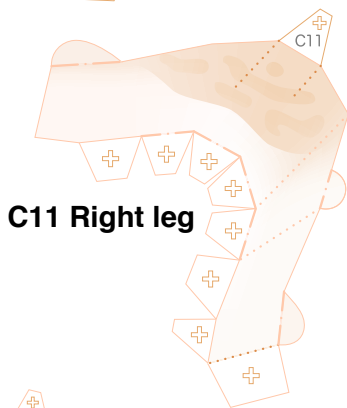
Refer to Assembly Instructions: Page4.



C2 Left leg

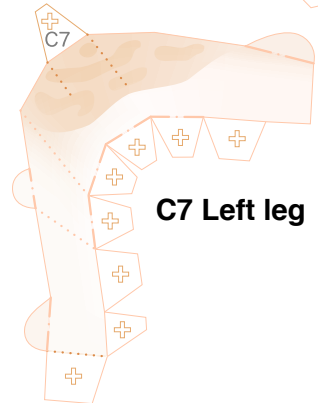


C3 Right leg



C11 Right leg

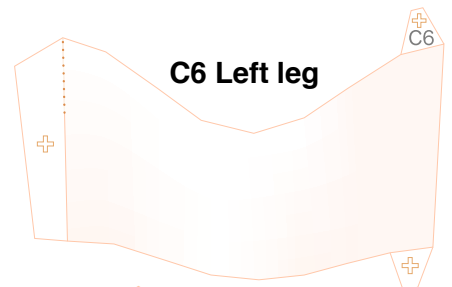
C1 Waist



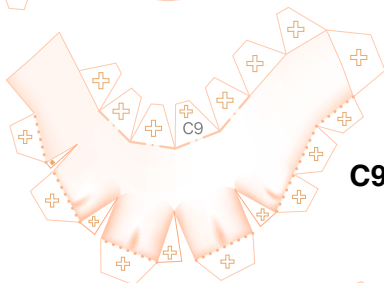
C7 Left leg



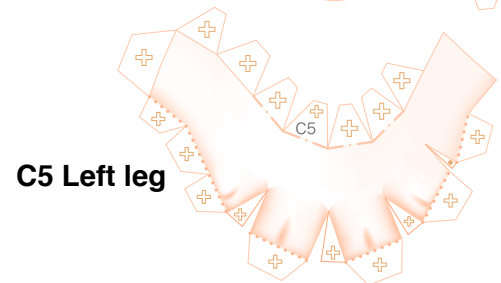
C10 Right leg



C6 Left leg



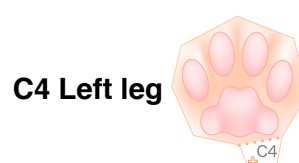
C9 Right leg



C5 Left leg



C8 Right leg



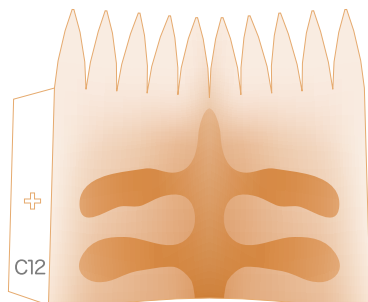
C4 Left leg



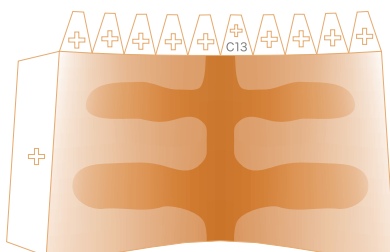
Tail parts

Refer to Assembly Instructions: Page4.

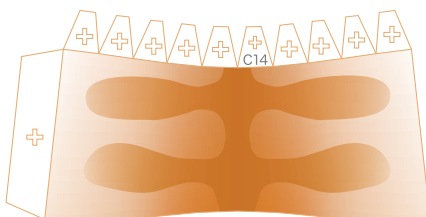
C12 Tail



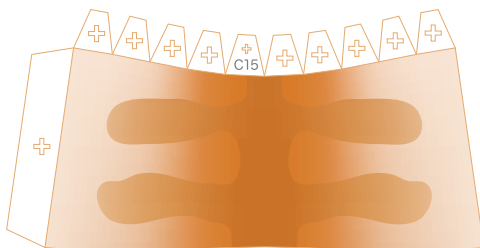
C13 Tail



C14 Tail



C15 Tail



C16 Tail

