

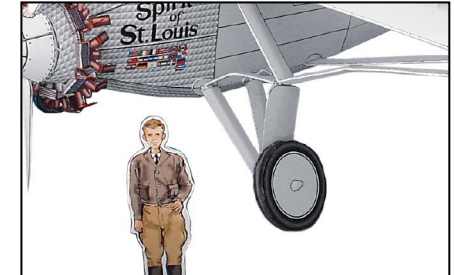


Spirit of St. Louis

The Spirit of St. Louis (also known as the Ryan NYP-1) is a single-engine plane that was successfully flown by Charles Lindbergh as a solo non-stop transatlantic flight. The main external features of the craft were its lack of front windshield, and its wings, which were extremely long compared to its body. The aircraft took off from New York's Long Island and flew 5,810km to Paris. The journey took 33 hours, 29 minutes and 29.8 seconds, which was regarded as quite fast at the time. It was the first solo, non-stop flight to travel this route.

This papercraft Spirit of St. Louis is about one twenty eighth the size of the real Spirit of St. Louis.

*This model was designed for Papercraft and may differ from the original in some respects.



■ Parts list (Assembly Instructions) : Twelve A4 sheets

■ No. of Parts: 177

*Build the model by carefully reading the Assembly Instructions, in the parts sheet page order.

Assembly Instructions



Mountain fold
(Dotted line)



Scissors line
(Solid line)



Valley fold
(Dashed and dotted line)



Cut in Line
(Red solid line)



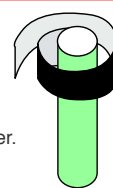
Completed parts become a cylinder
You may like to use a metal rod as a guide.



Layer wrapping (roll)
Wrap around and glue to the cylinder, to use as a glue tab



Wrap around and glue to the top of the cylinder.



How to make the cylinders

This craft involves making cylinders with diameters of 3 to 7mm, so it may be helpful to have some rods of sizes about 0.5mm thinner handy.



Guide rod

Glue tab notation key

Each glue tab has a symbol and number printed on it. Glue with in the same part.

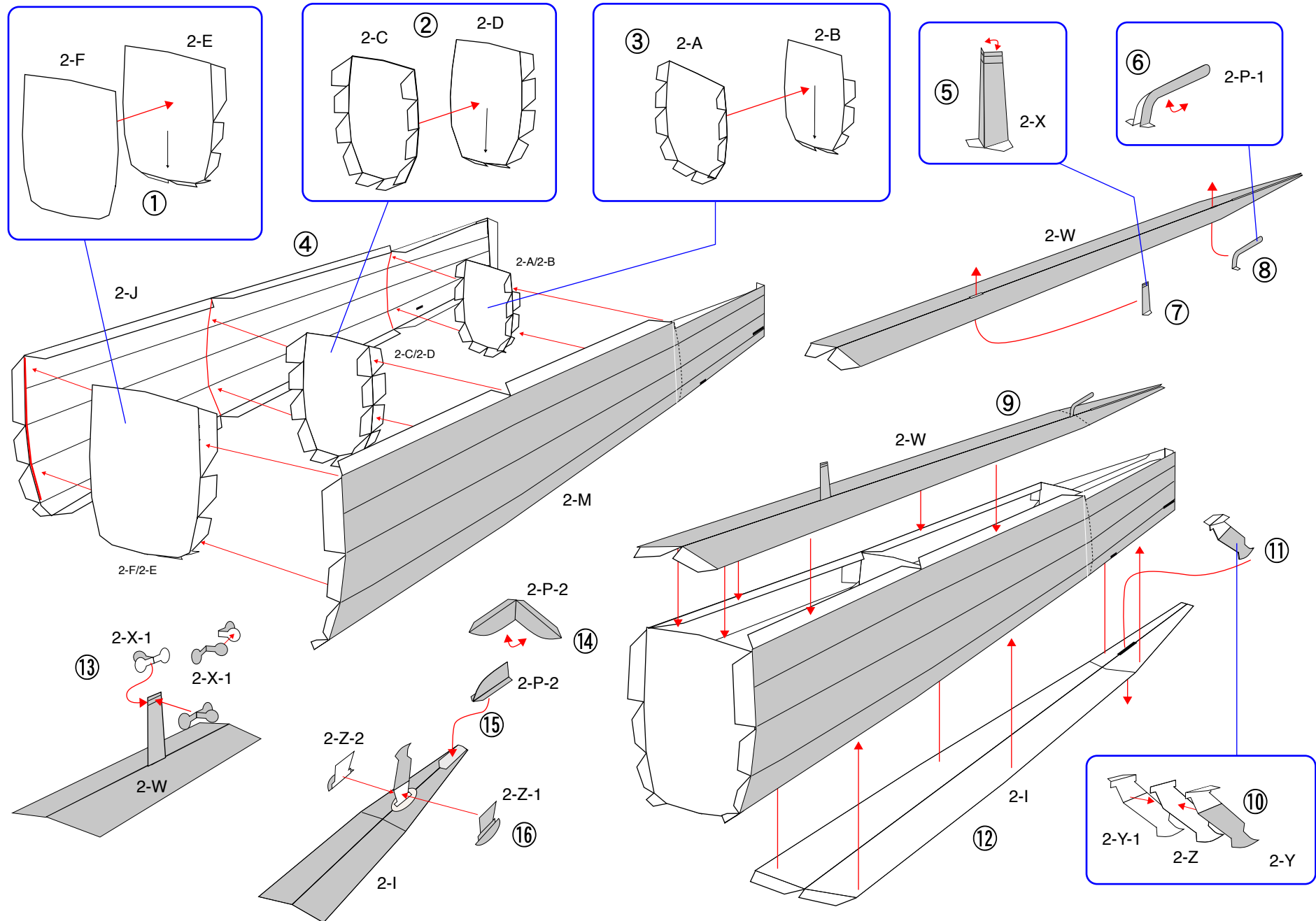


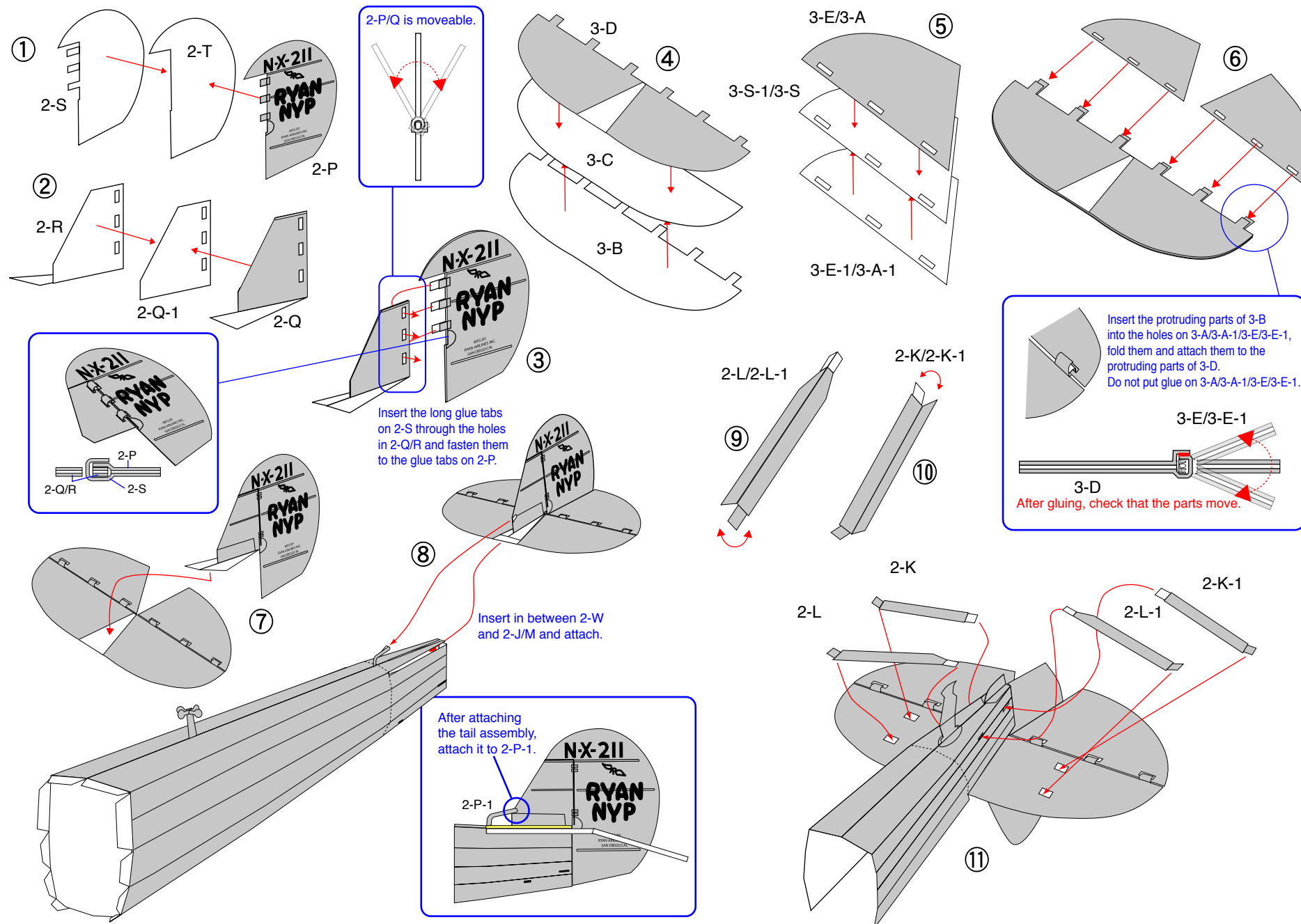
Glue

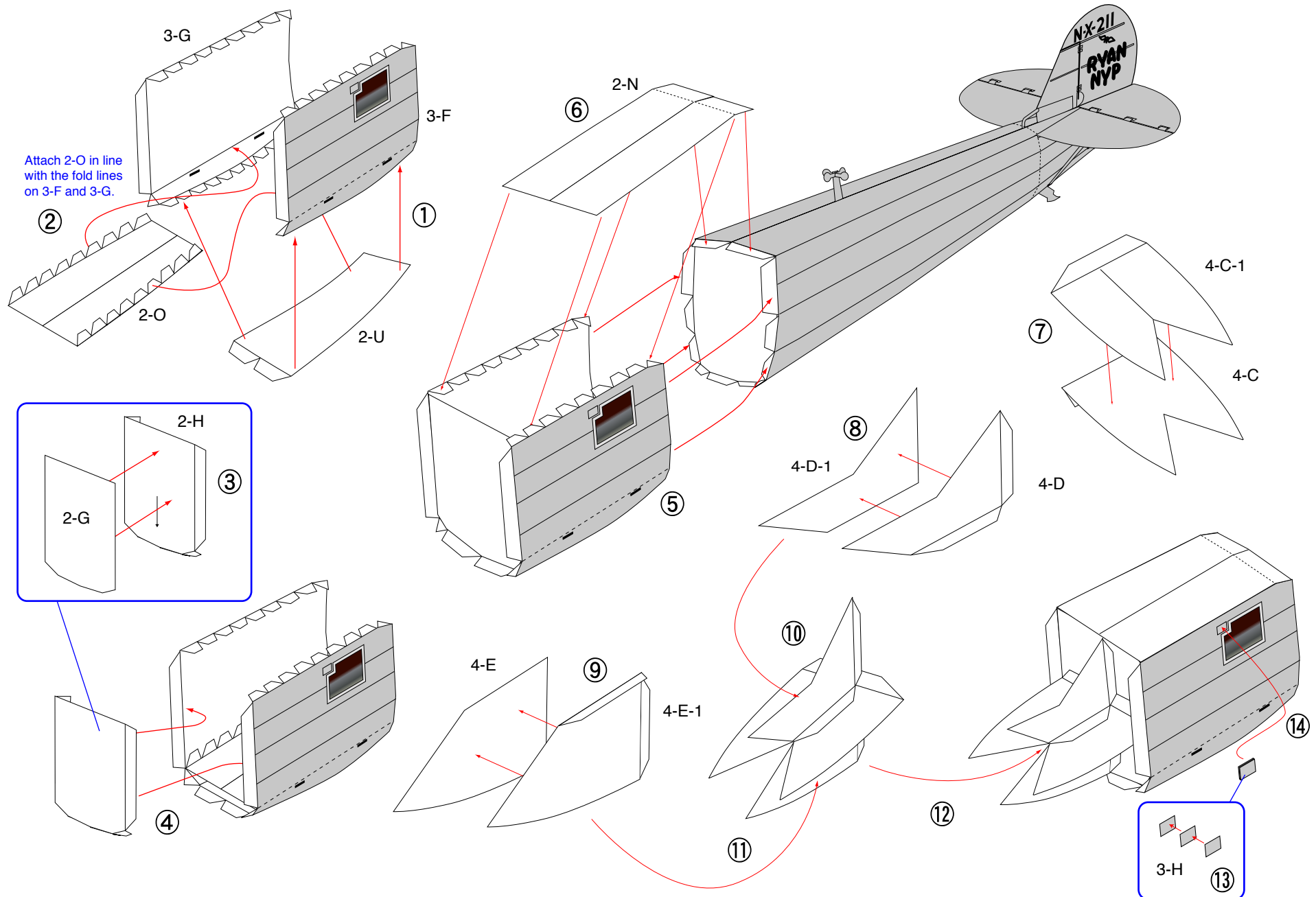


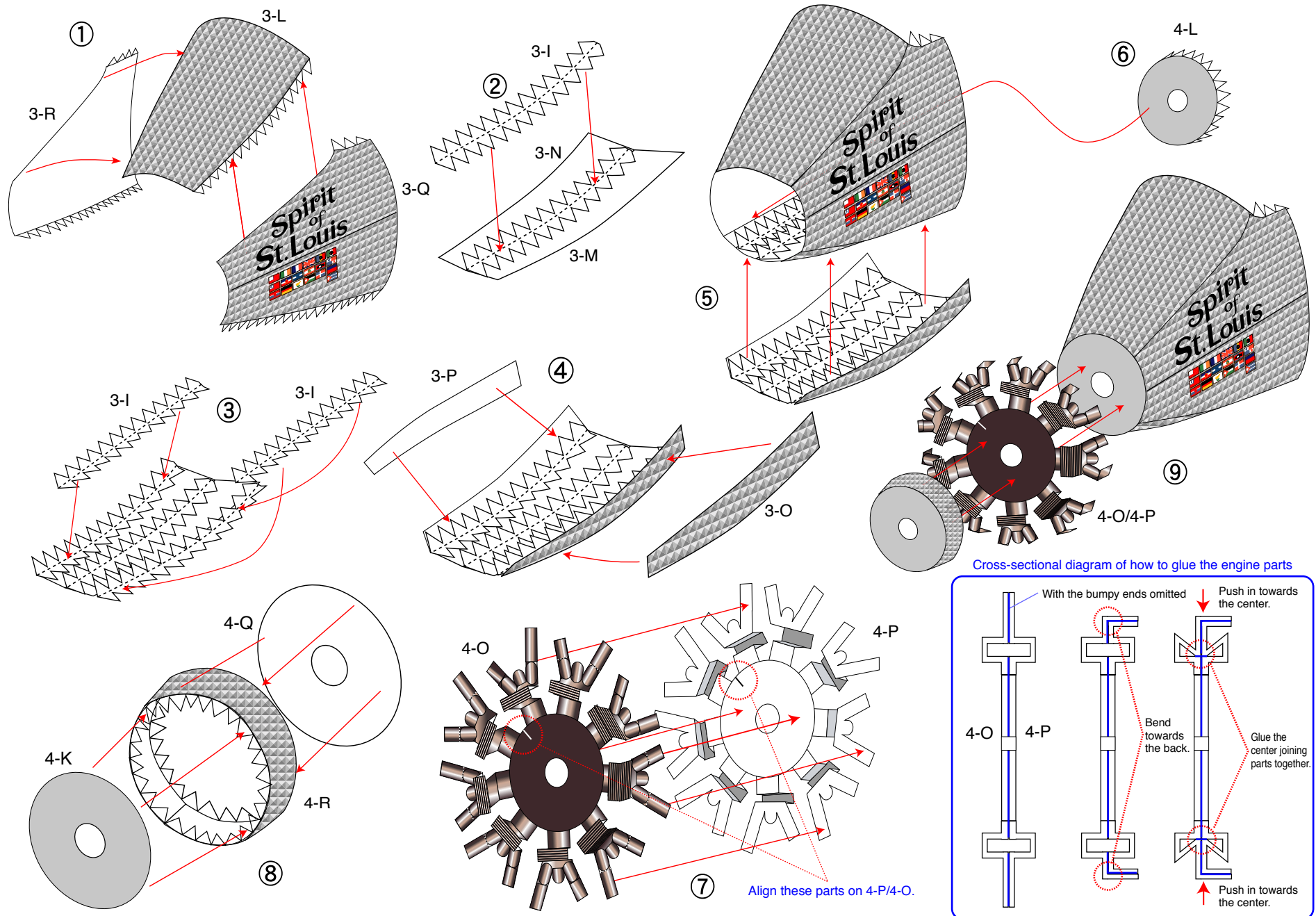
Trace along the folds with a ruler and a used pen (no ink) to get a sharper, easier fold.

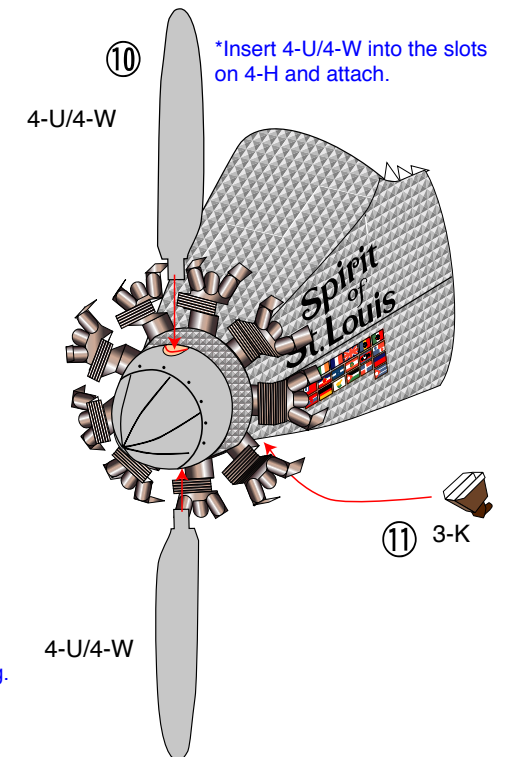
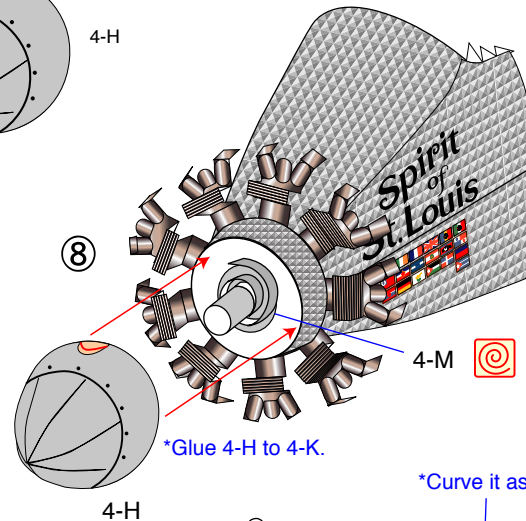
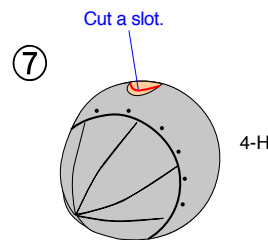
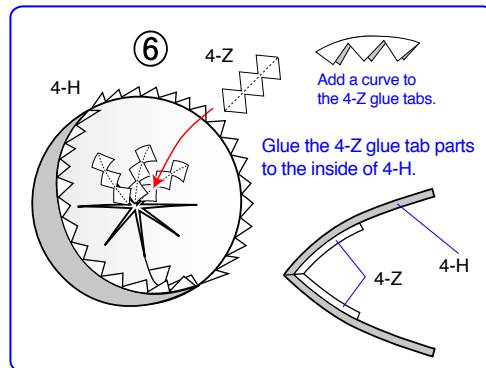
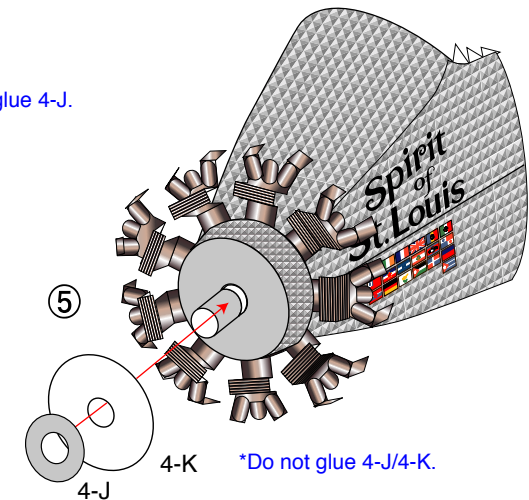
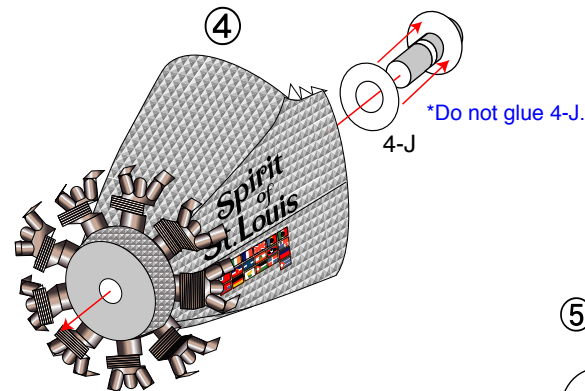
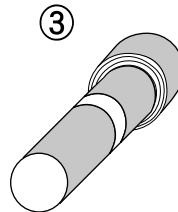
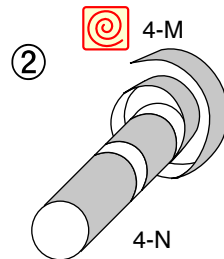
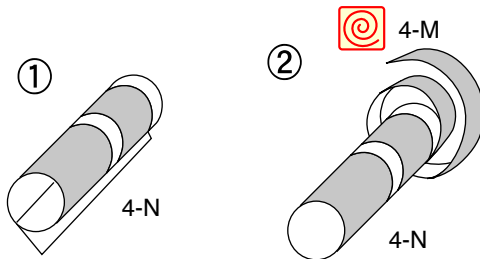
Glue, scissors and other tools may be dangerous to young children so be sure to keep them out of the reach of young children.





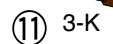
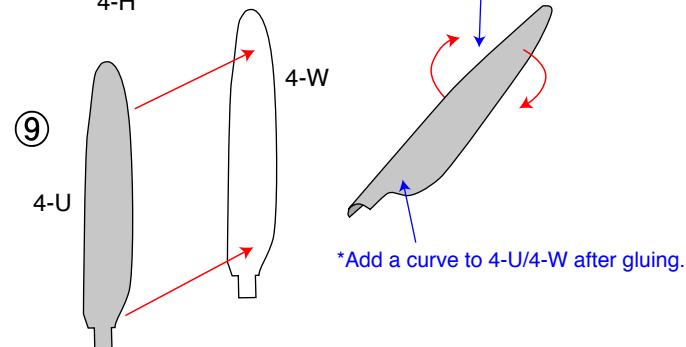
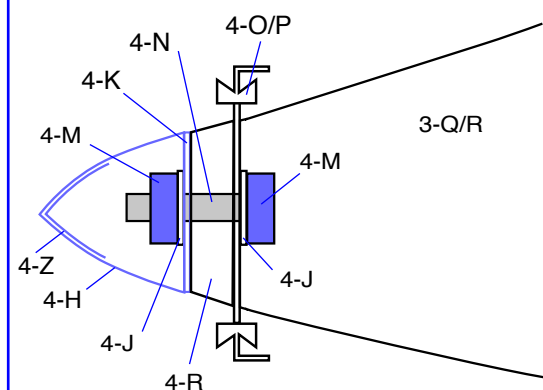


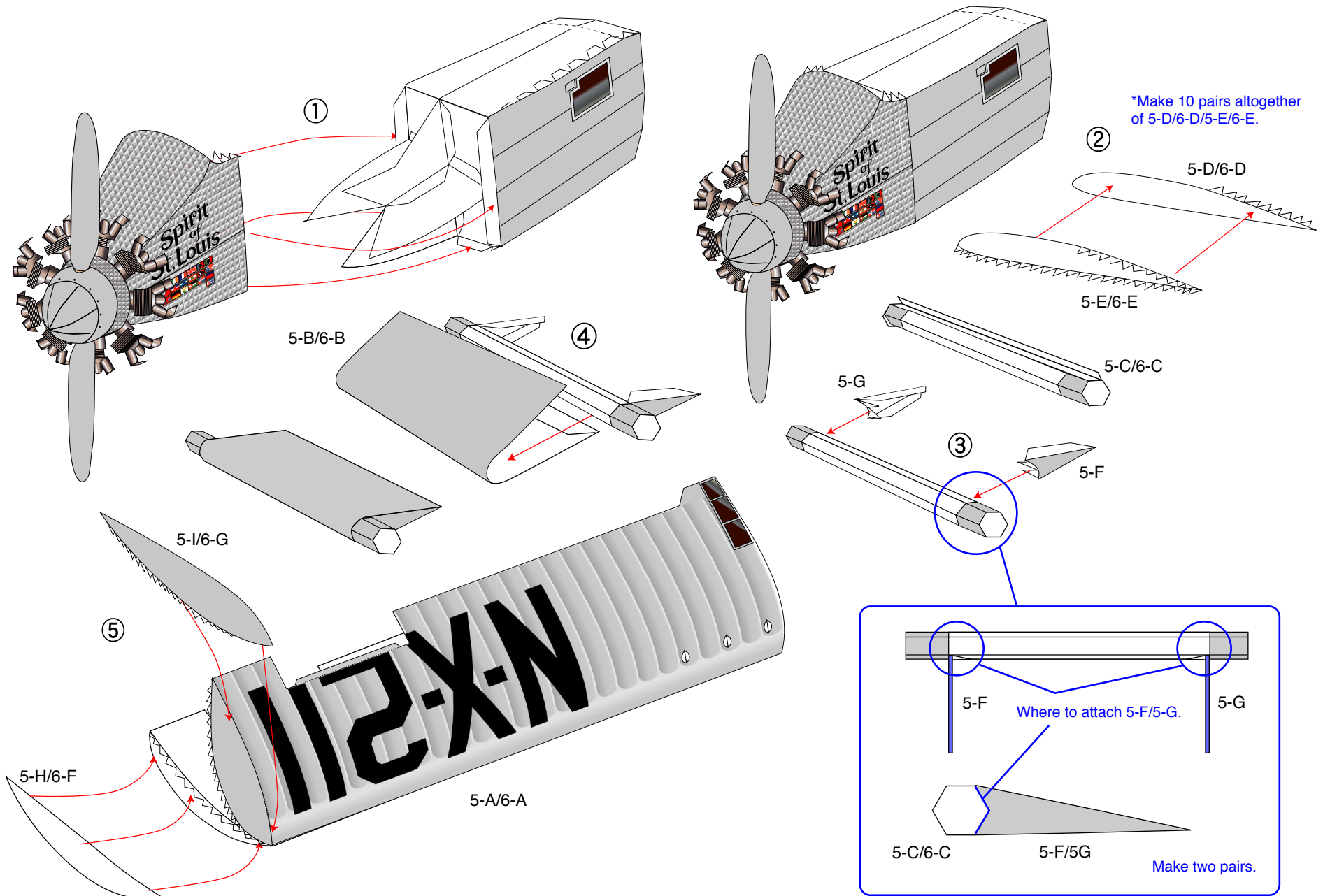




Cross-sectional diagram of how to assemble the propeller shaft

Only put glue on 4-M. In step ⑦, before attaching 4-H to 4-K, check that the 4-K parts rotate.





- ① Place 5-A/6-A on the template on page 7 of the parts sheet as shown in the figure below and attach them in line with the black lines.

