



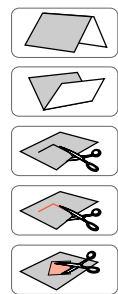
● View of completed model

## Drum Set

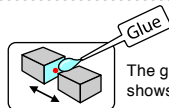
Scale : 1 / 7

A drum set is a collection of various types of drums, cymbals and other percussion instruments that are lined up in a formation that makes them easily played by one person. The number and type of instruments included can be arranged according to the performer's preference or characteristics of the music. The performer usually plays seated on a stool. The idea for the drum set is said to have originated in military bands, when a cymbal was placed on top of the bass drum to make it easier for the performer holding it. This was followed by the idea to use a pedal to play the bass drum with the foot, and the invention of the hi-hat, two cymbals on top of each other that are clashed together. These adaptations have resulted in the drum set up and beat style we know today.

### Assembly Instructions



- Mountain fold (dotted line)  
● Make a mountain fold.
- - - - - Valley fold (dashed and dotted line)  
● Make a valley fold.
- Scissors line (solid line)  
● Cut along the line.
- Cut In line (orange solid line)  
● Cut a slot.
- Cut out (orange shaded)  
● Cut out the area marked.



- Glue spot (Red dot)  
Glue parts with the same number together.
- Glue spot (Green dot)  
Glue within the same part.
- Glue spot (Blue dot)  
Glue to the rear of the other part.
- Glue spot (Yellow dot)  
Apply glue to the back, and attach to the back of the other parts.



● Front



● Right side



● Back



● Left side

- Parts sheet (Pattern) : Twenty-two A4 sheets (No.1~No.22)
- No. of Parts : 384
- Assembly Instructions : Ten A4 sheets (No.1~No.10)

\*Build the model by carefully reading the Assembly Instructions, in the parts sheet page order.

\*Assembly will be easier if you write the part's number on the back of each part.

### Handy Hint



Trace along the folds with a ruler and a used pen (no ink) to get a sharper, easier fold.

### Tools and materials



Scissors, set square, glue (We recommend stick glue), pencil, used ballpoint pen, toothpicks, tweezers, (useful for handling small parts)

### Assembly tip



Before gluing, crease the paper along mountain fold and valley fold lines and make sure rounded sections are nice and stiff.

### Caution



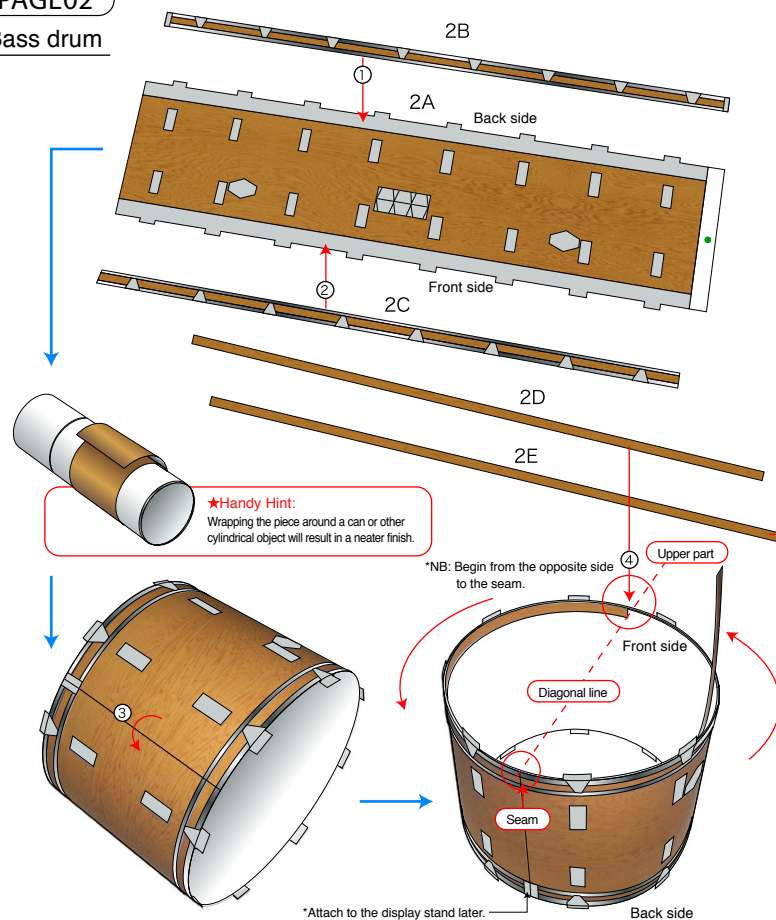
Glue, scissors and other tools may be dangerous to young children so be sure to keep them out of the reach of young children.

## Before starting.

- Each page of the "Parts sheet" has a sheet number in the top left-hand corner (Sheet No.1~No.22). Work in order of these sheet numbers. (The parts for assembly are on pages 2 ~ 22.)
- There are 384 parts in total, and each part is numbered according to its page. Also, the glue spots on each part are marked with the number of the part to attach to them.
- The numbers ① ② ③ ~ in the Assembly Instructions indicate the order to attach parts. Follow this order when attaching.
- When one part has multiple spots to attach, or glue spots for attaching other pieces, colors (●●●●●) and numbers are used to show the precise location and method for attaching. Check the diagrams in the "Assembly Instructions" carefully for each part as you work.

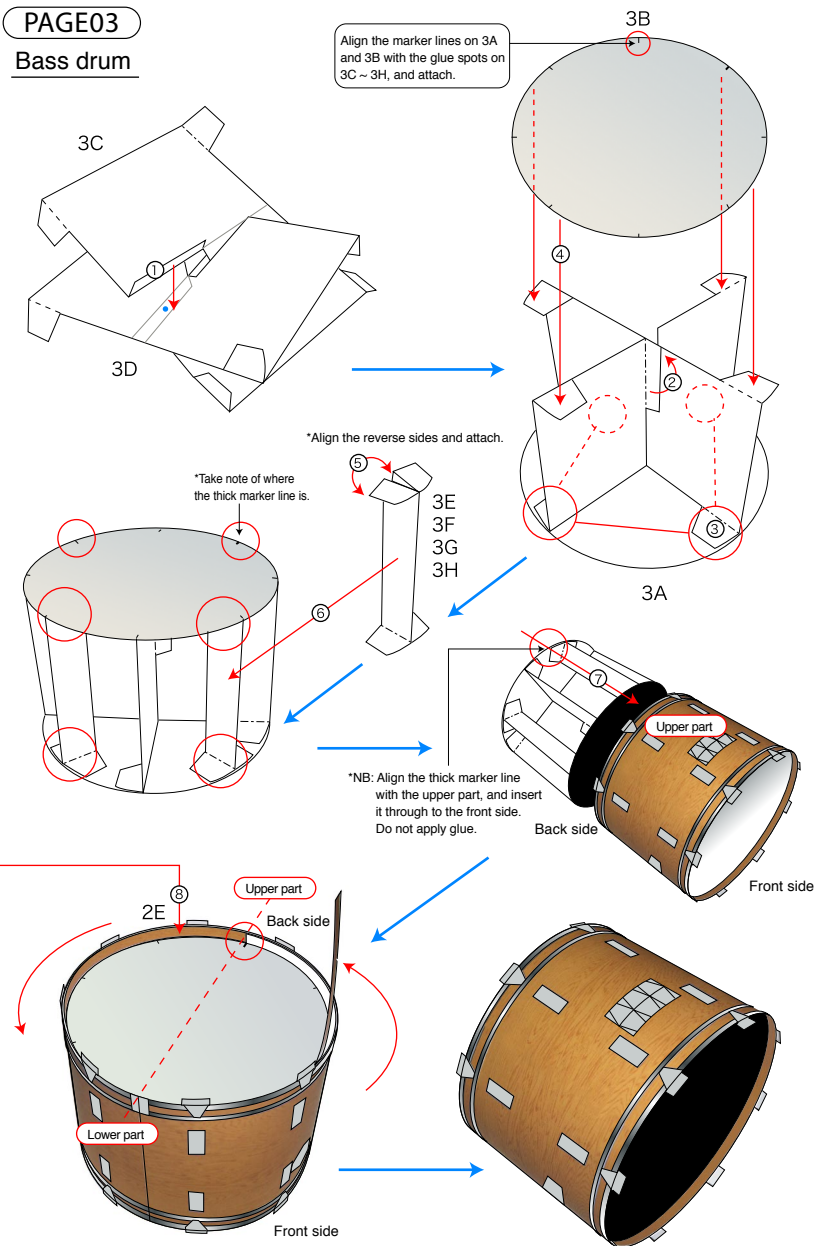
### PAGE02

#### Bass drum



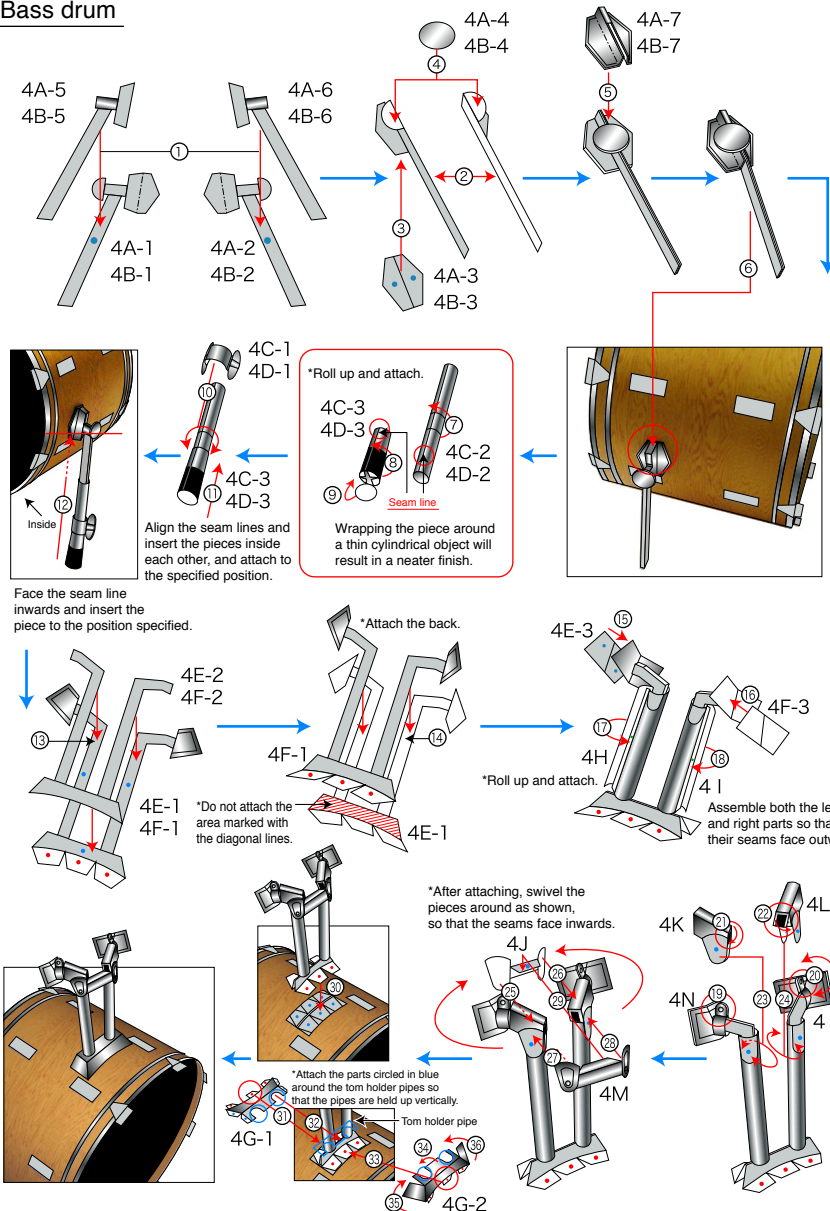
### PAGE03

#### Bass drum



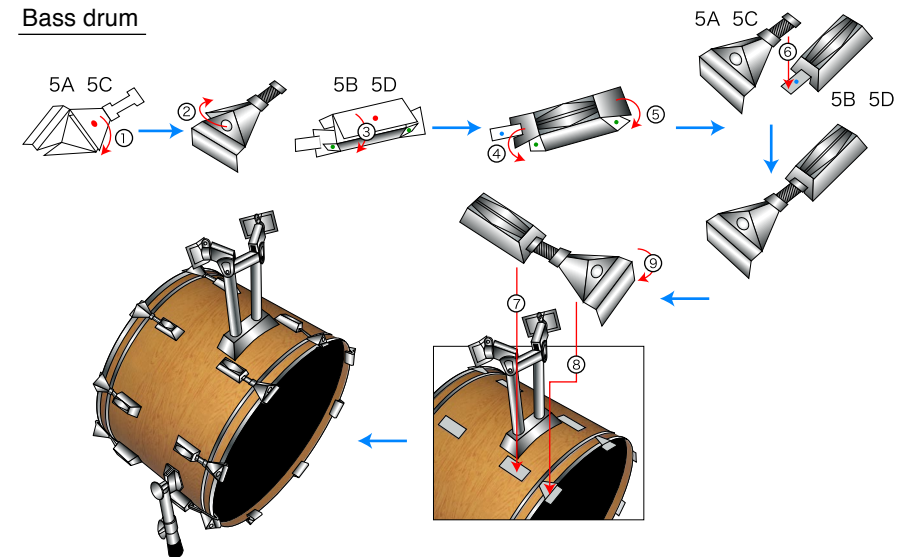
## PAGE04

### Bass drum



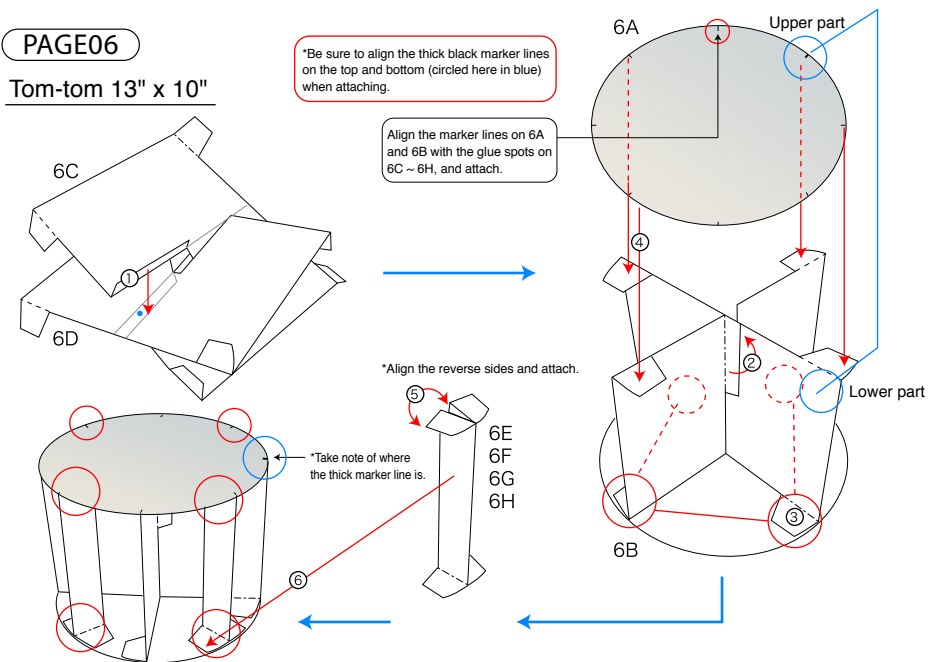
## PAGE05

### Bass drum



## PAGE06

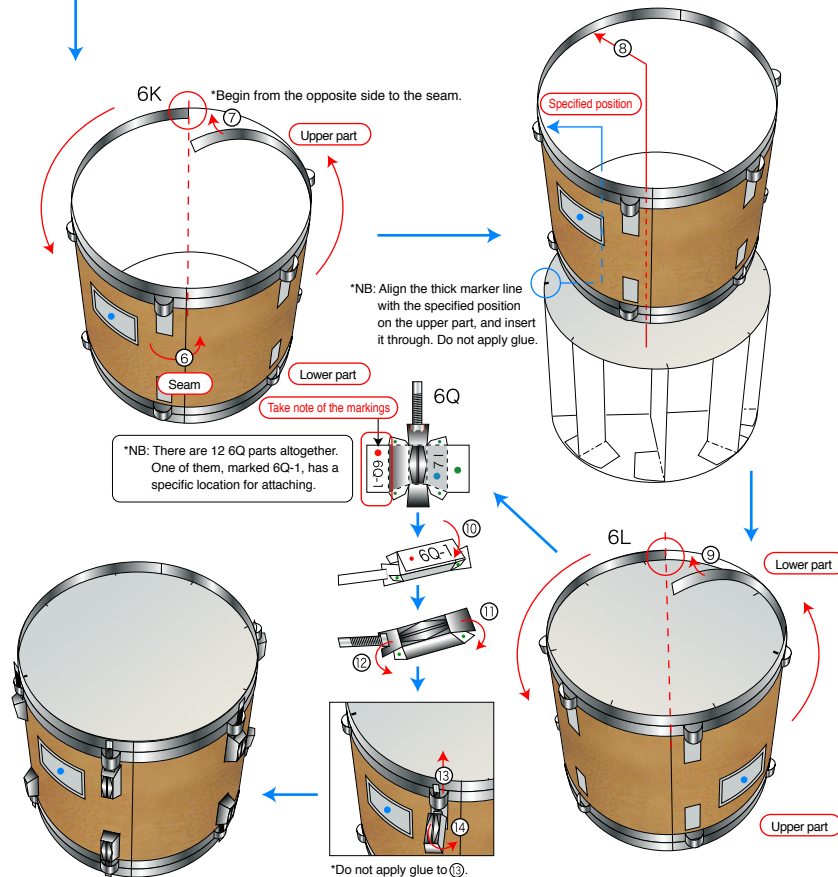
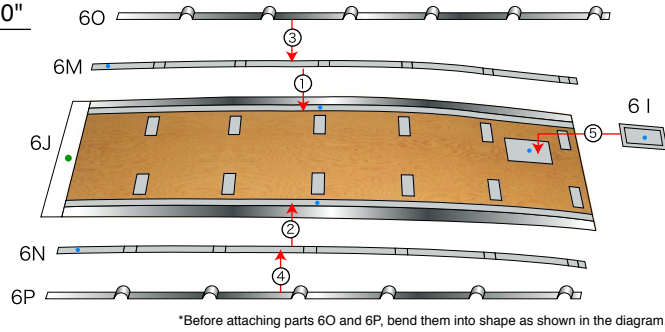
### Tom-tom 13" x 10"





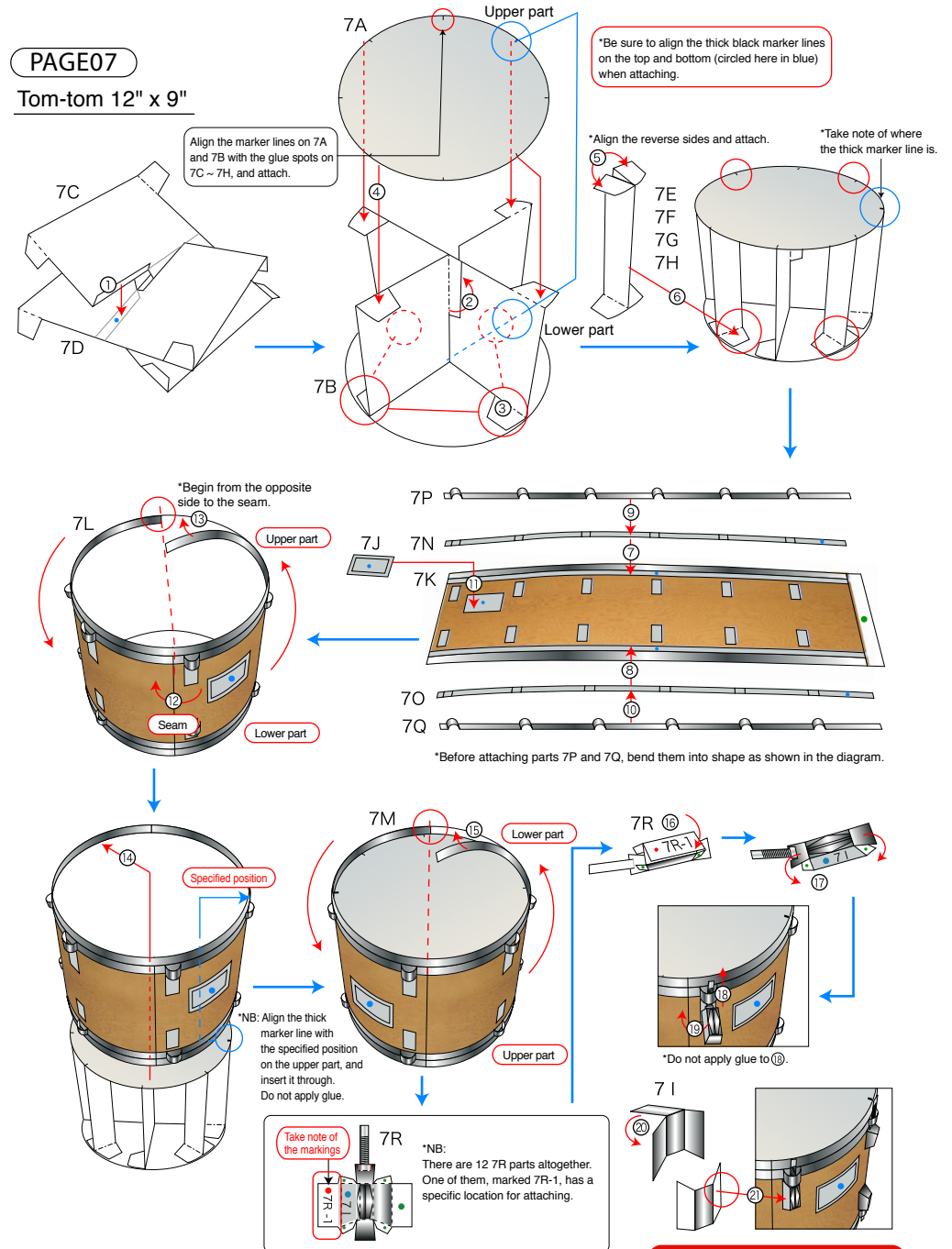
## PAGE06

Tom-tom 13" x 10"



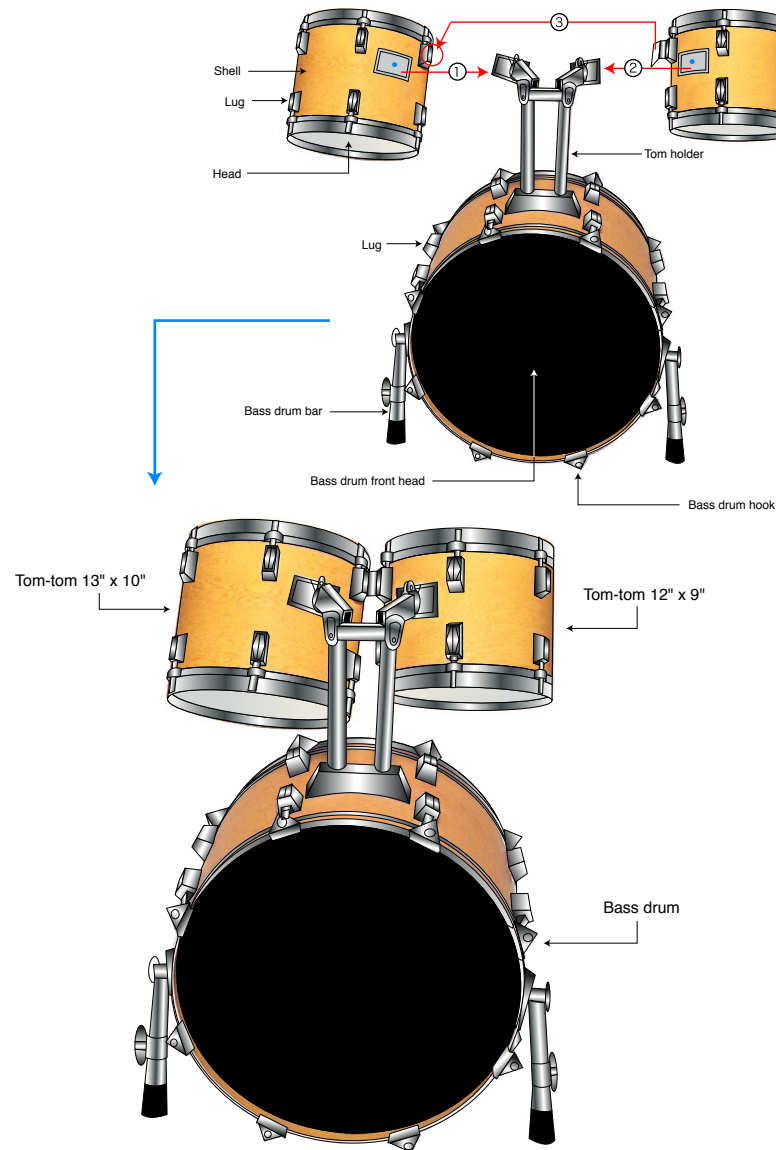
## PAGE07

Tom-tom 12" x 9"



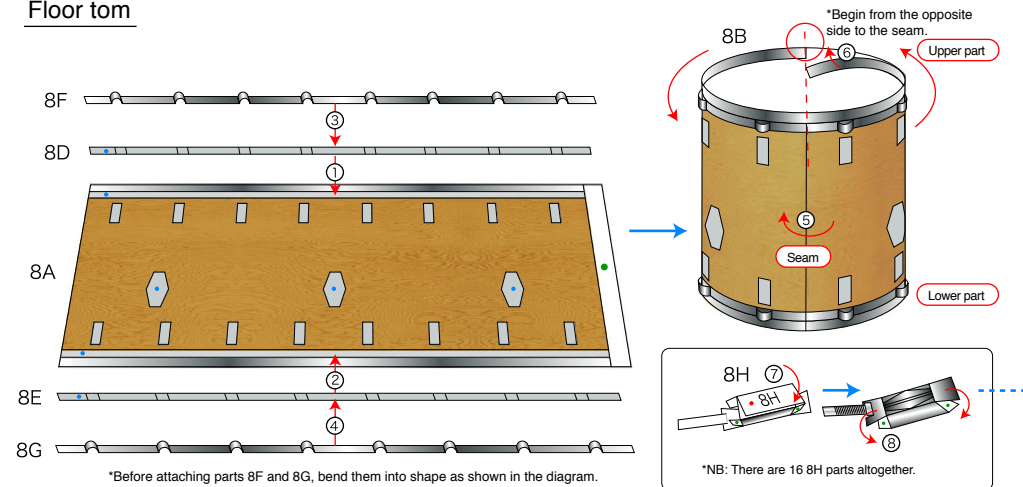
PAGE02 • 03 • 04 • 05 • 06 • 07

Bass drum / Tom-tom 13" x 10" / Tom-tom 12" x 9"



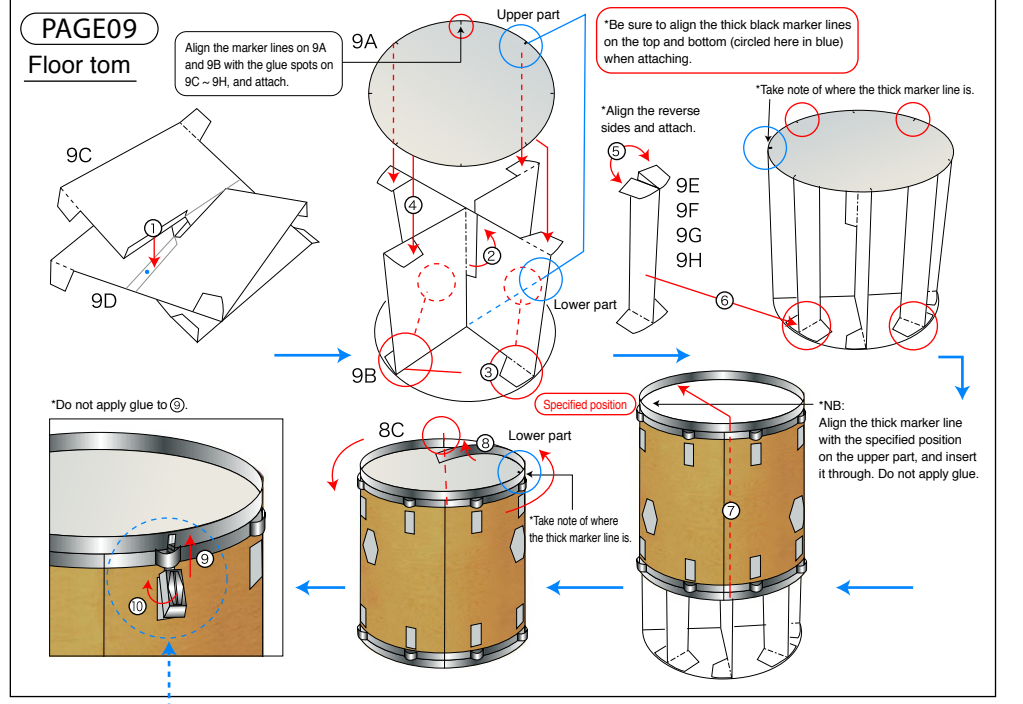
PAGE08

Floor tom



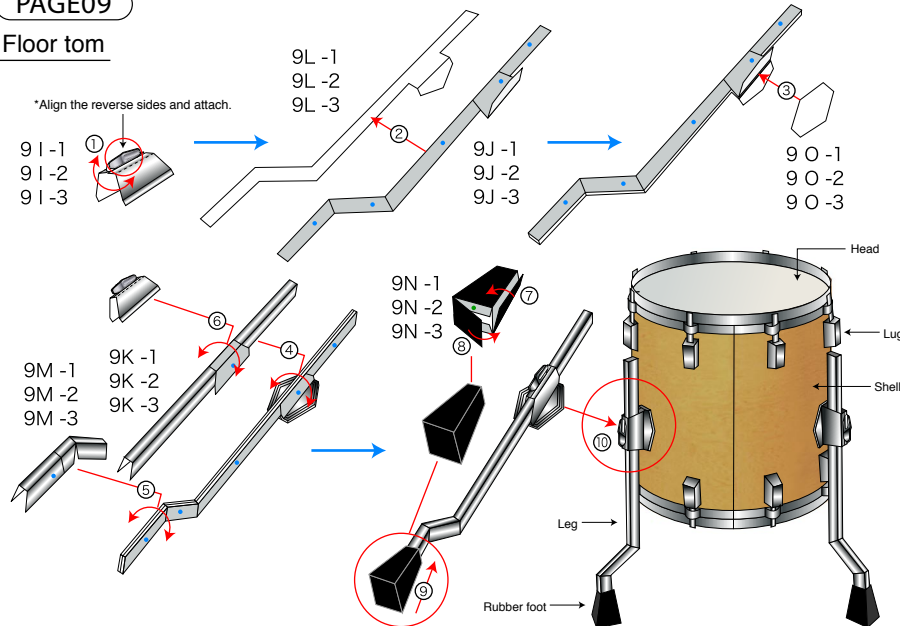
PAGE09

Floor tom



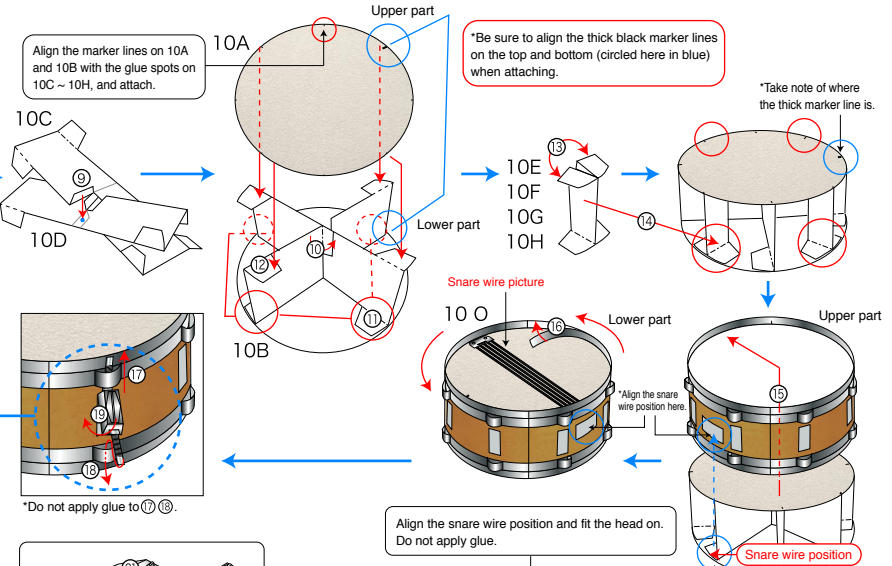
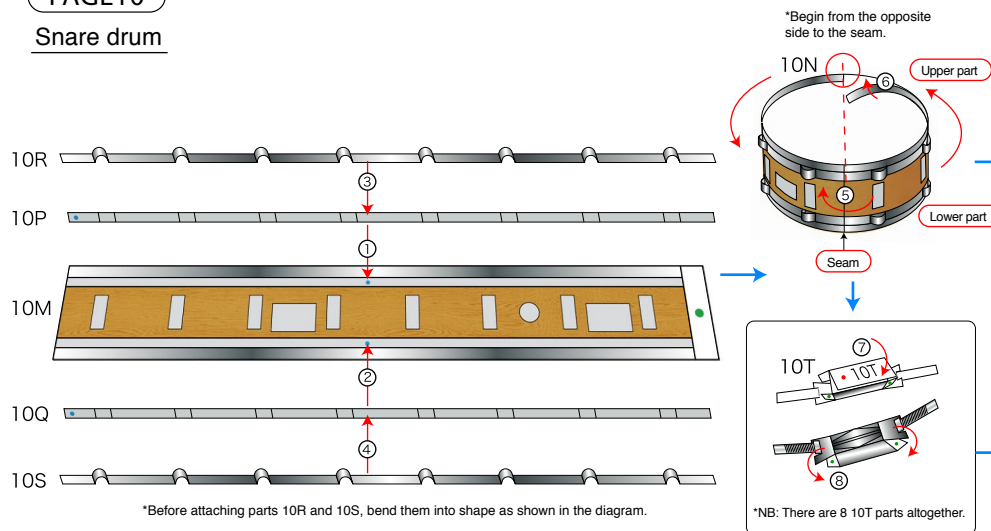
## PAGE09

### Floor tom



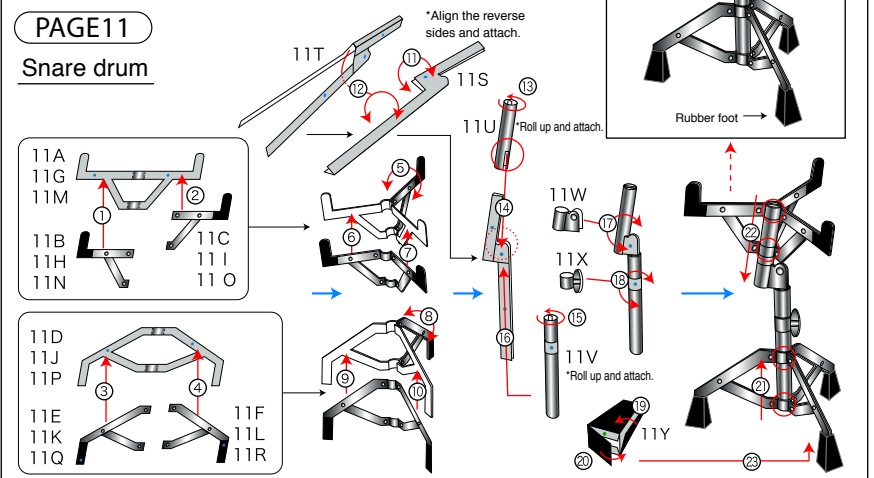
## PAGE10

### Snare drum



## PAGE11

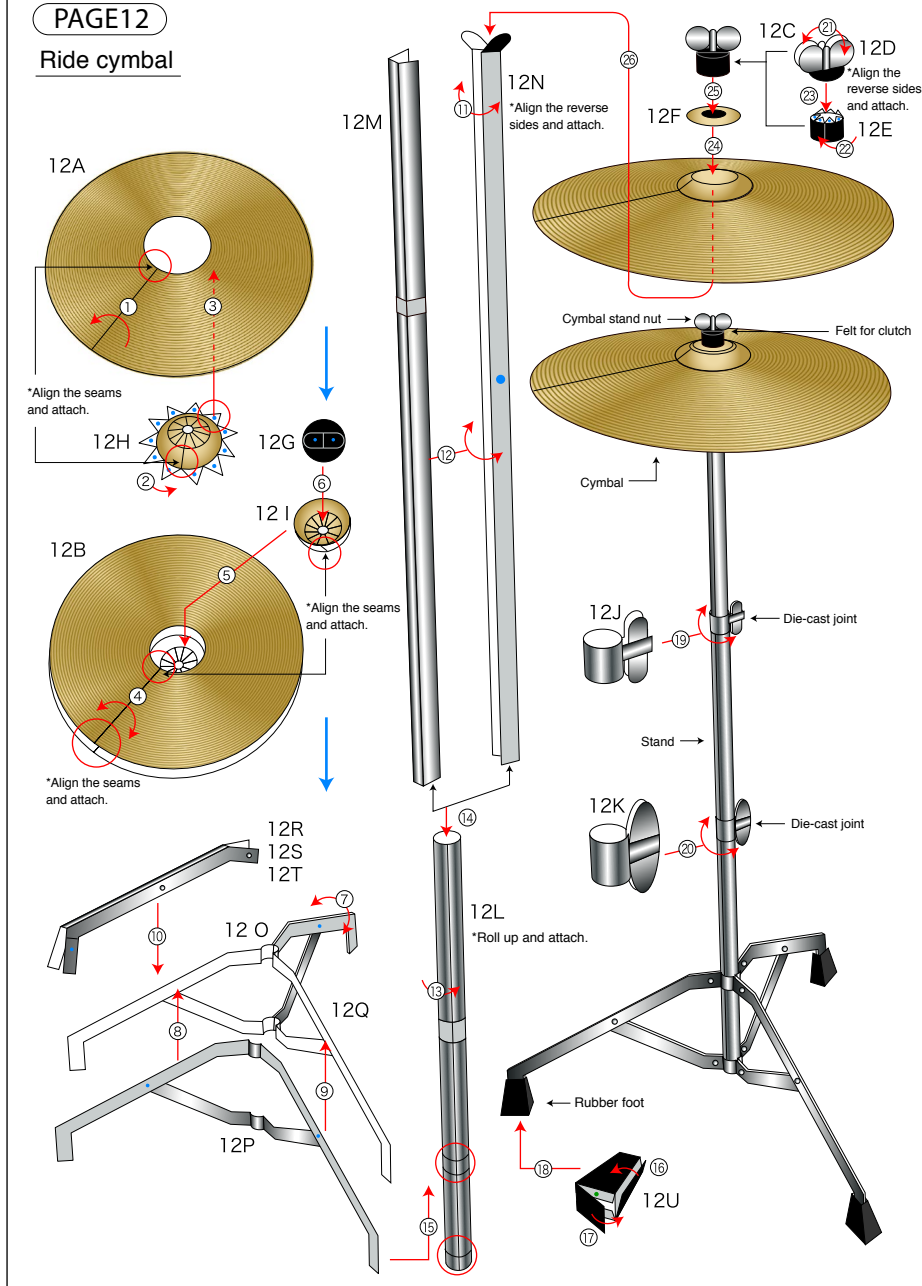
### Snare drum





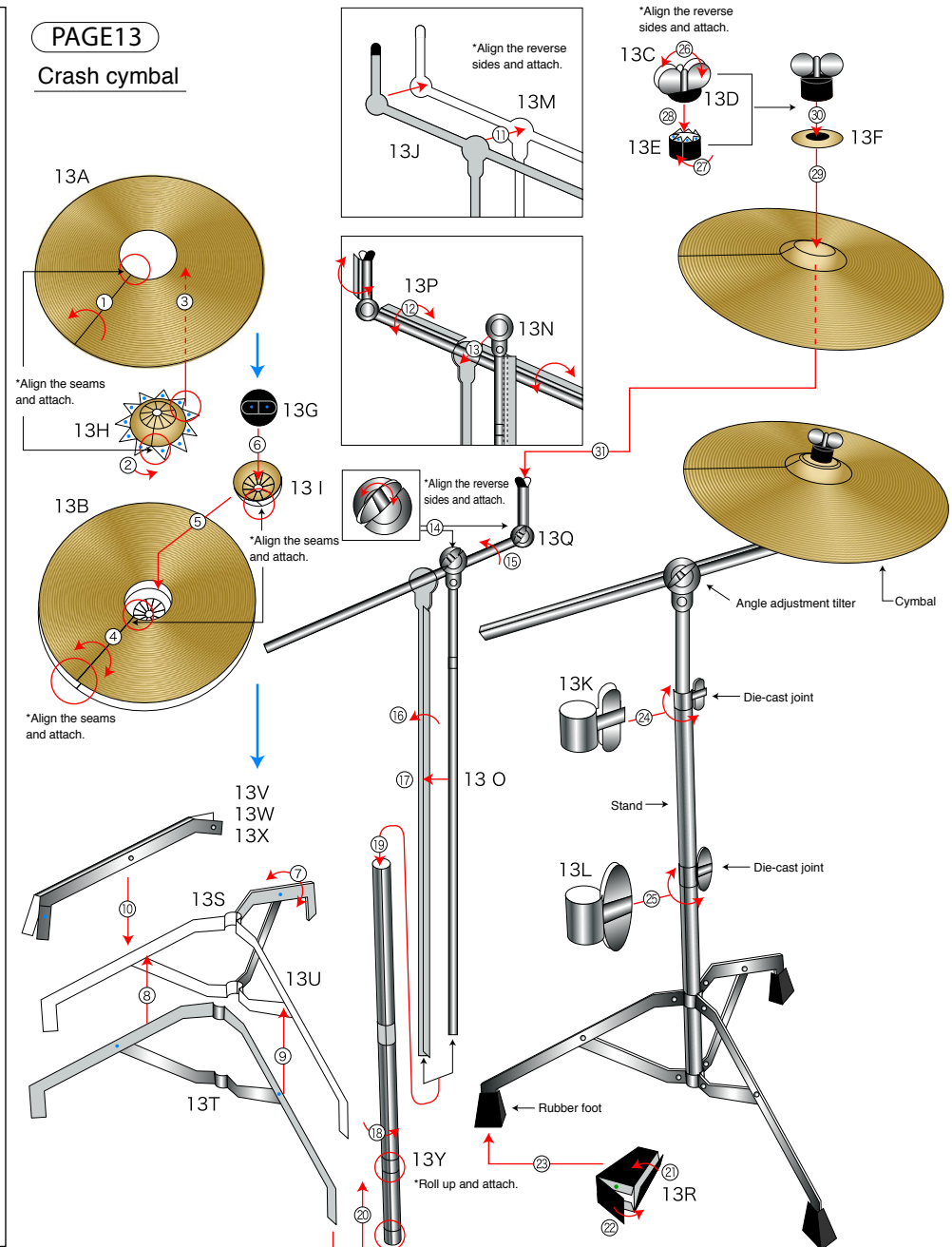
## PAGE12

### Ride cymbal



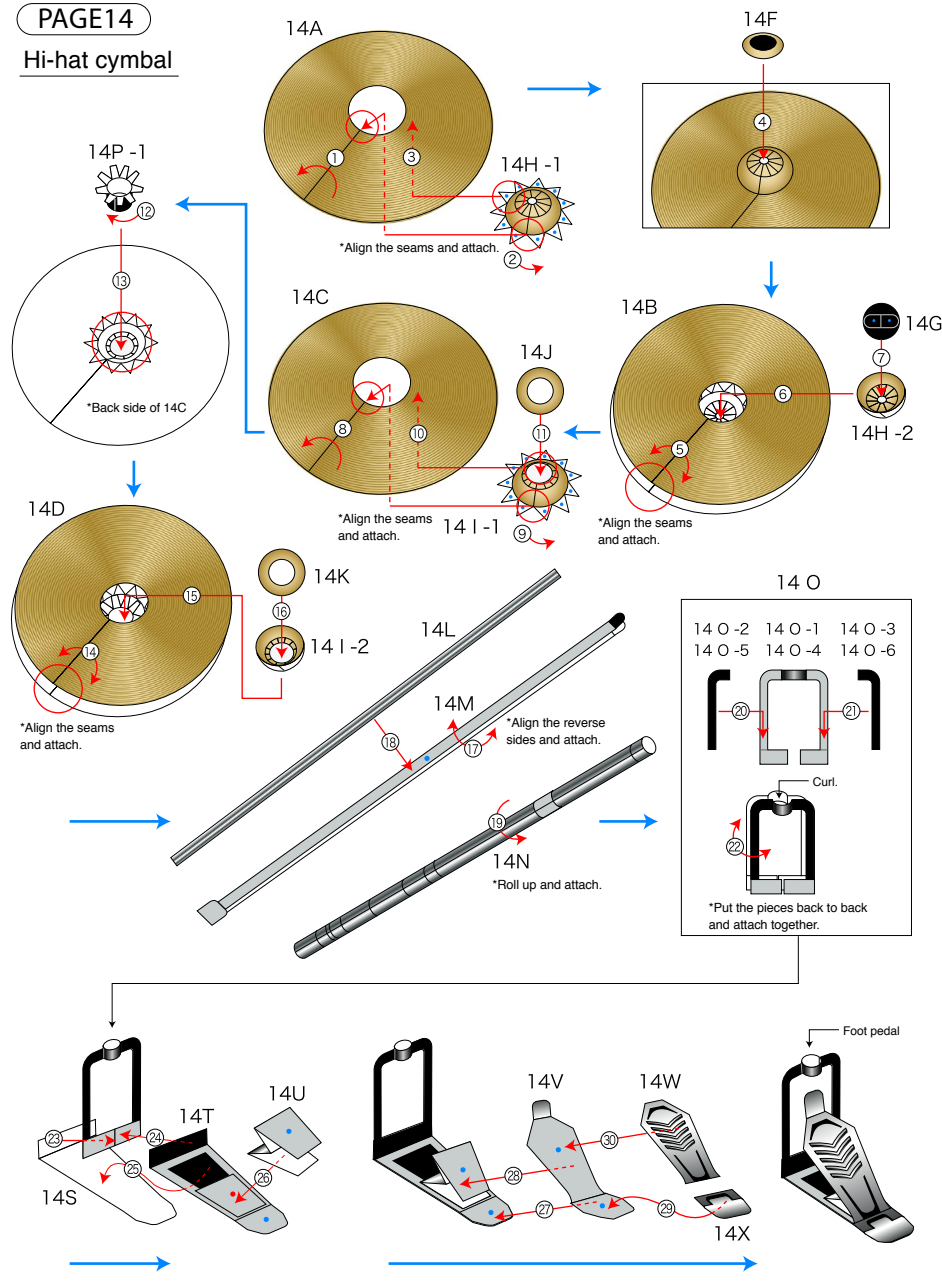
## PAGE13

### Crash cymbal



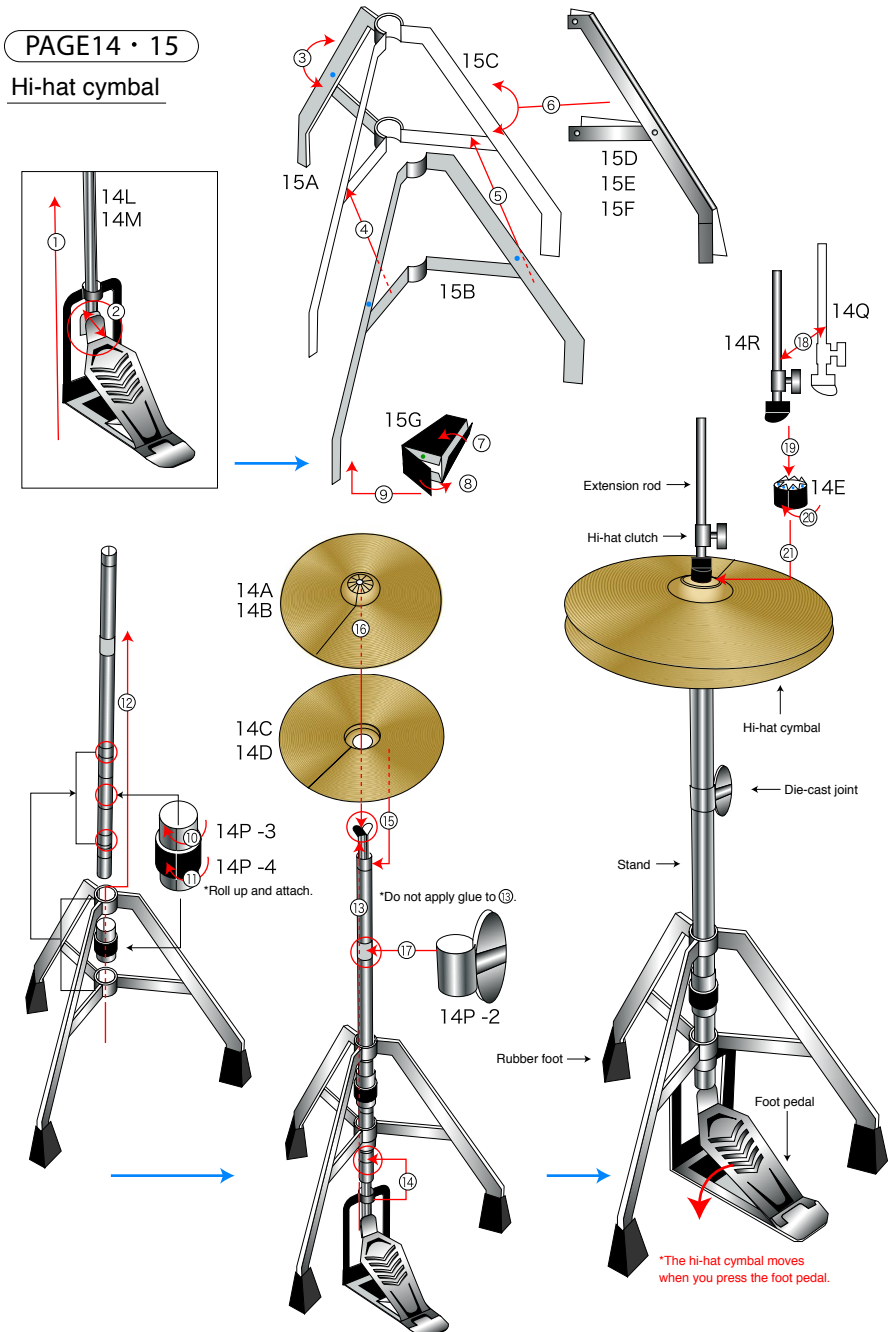
## PAGE14

### Hi-hat cymbal



## PAGE14 • 15

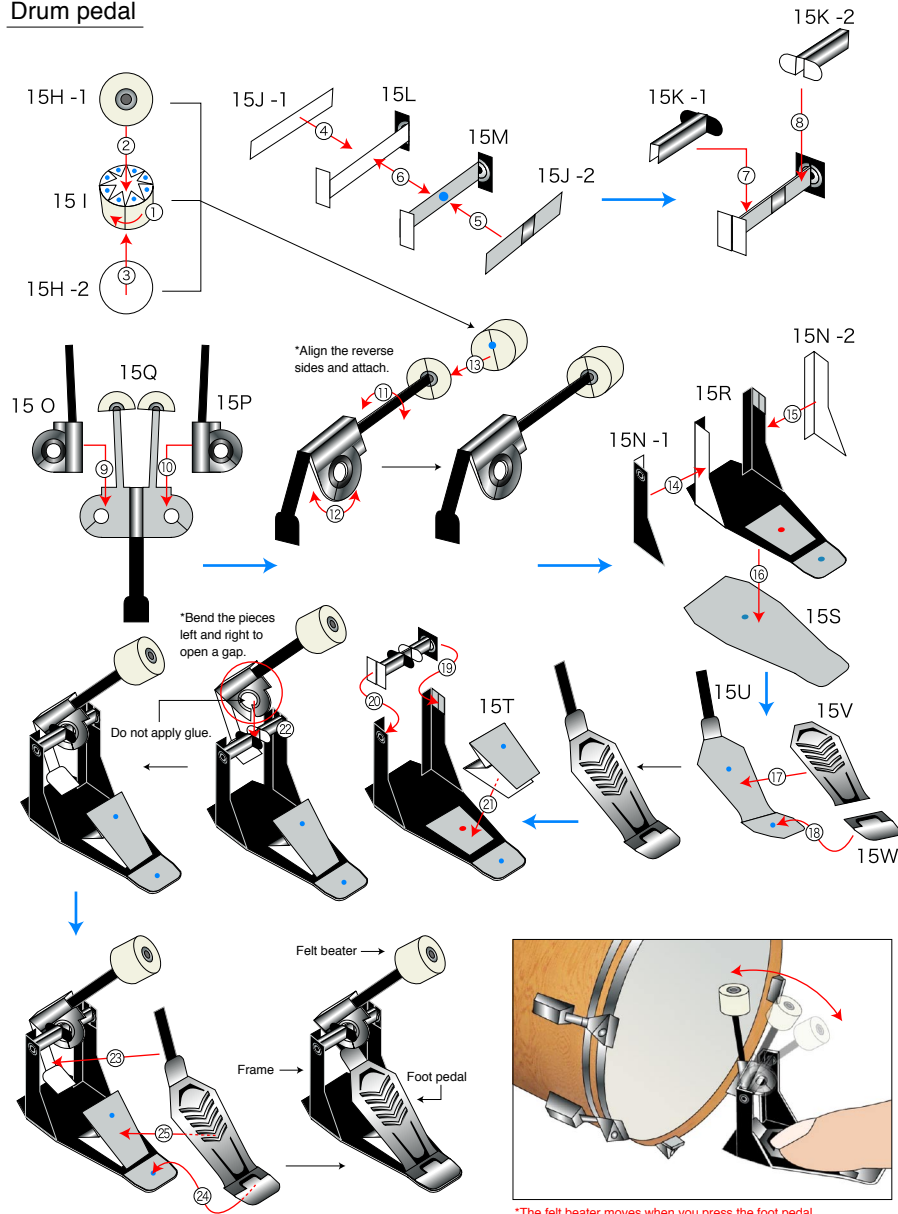
### Hi-hat cymbal





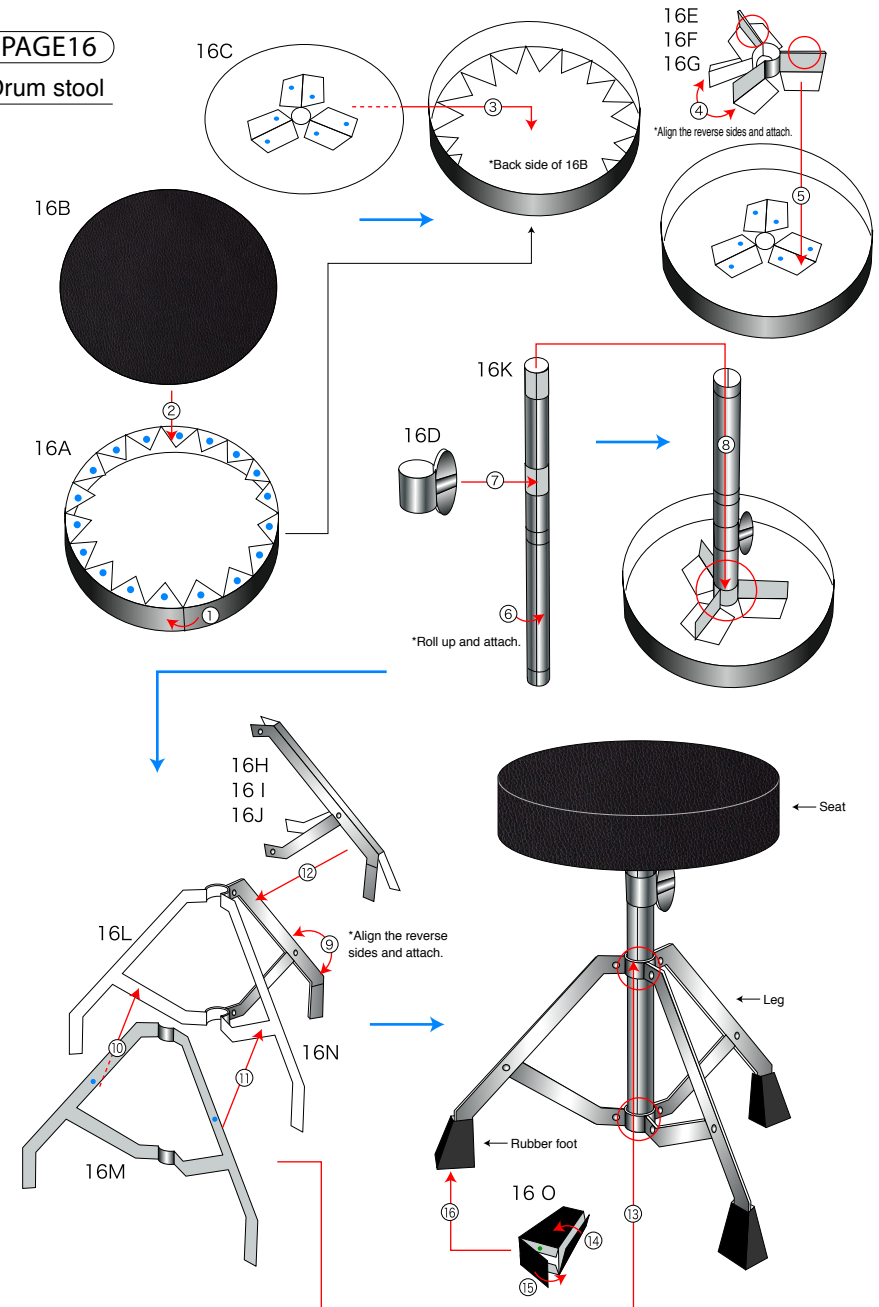
## PAGE15

### Drum pedal



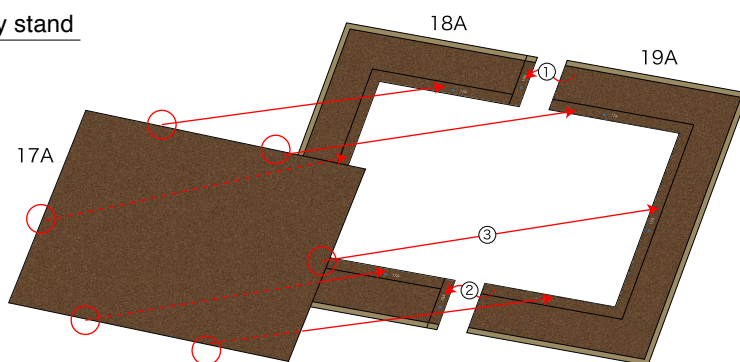
## PAGE16

### Drum stool



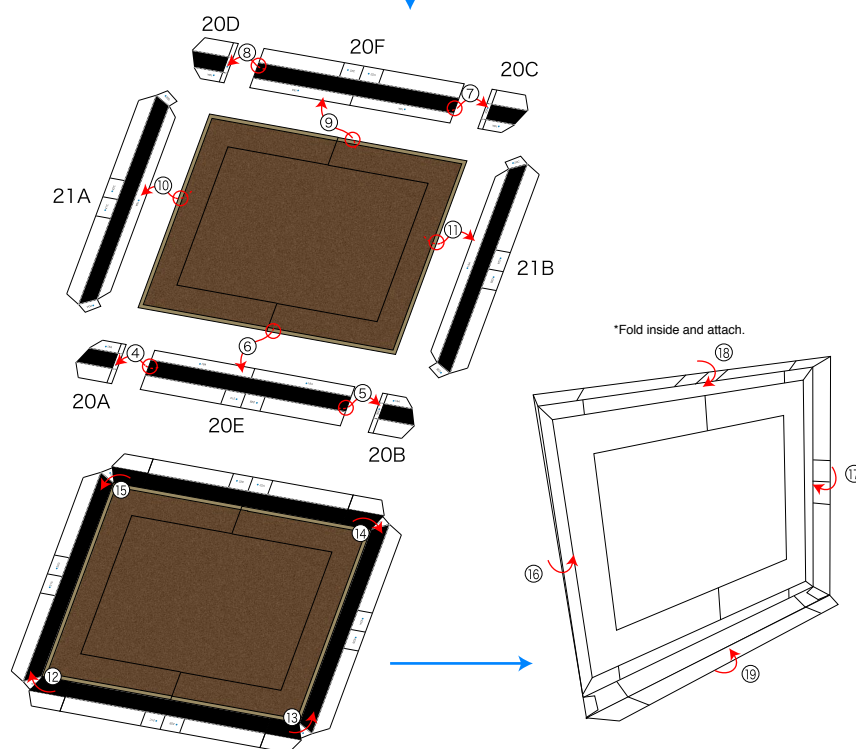
PAGE17 · 18 · 19

Display stand



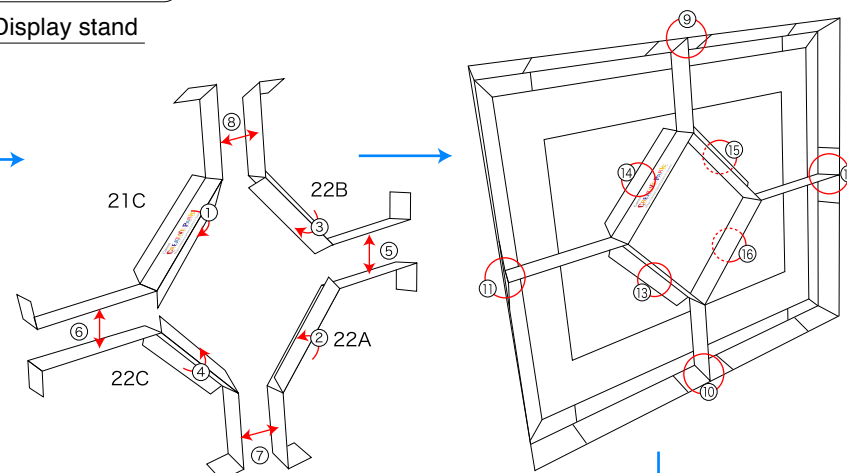
PAGE20 · 21

Display stand



PAGE21 · 22

Display stand



Completion

● View of completed model

\*The completed photo is an image of a basic drum set. The parts can be arranged to your liking.